

Joint PhD Educational Studies

Program Highlights

- Individualized study plan
- Combination of on-line and on-site delivery
- Inter-university teams of instructors and supervisory committees
- Personalized approach to comprehensive examinations
- Flexible residency requirements
- Full-time and part-time studies

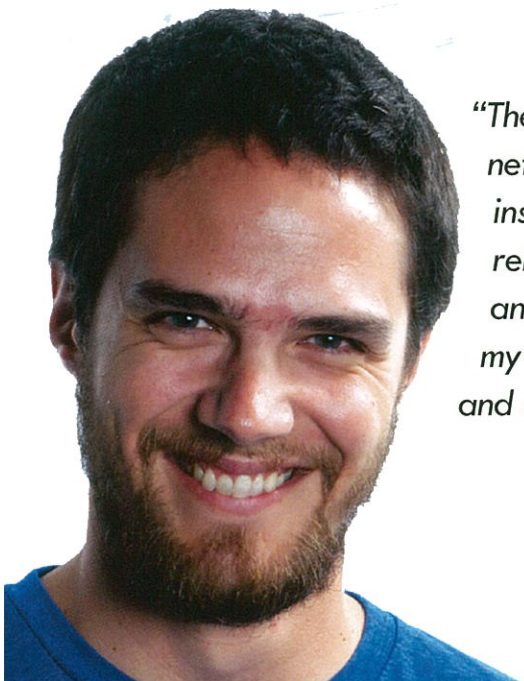
Fields of Study

- Cognition and Learning
- Educational Leadership and Policy Studies
- Social/Cultural/Political Contexts of Education

Apply by November 15

For more information visit our web site or email us at: jointphd@brocku.ca

www.jointphdined.org



"The program offers incredible access to a network of scholars across three fabulous institutions. Most importantly, it facilitated relationships with colleagues from Canada and abroad which will span the length of my career. The mentorship from my supervisor and committee is phenomenal.

David

The Joint PhD in Educational Studies is an innovative collaboration between Brock University, Lakehead University and the University of Windsor.

We offer students individualized plans of study involving inter-university teams of instructors and supervisory committees.

Three
distinct university
cultures One
uniquely empowering
PhD program



Lakehead
UNIVERSITY



University
of Windsor