

Your Results



2014-2016
All Employee Groups
Comparison

Response Rates

2014 Response Rates:

1) Response rate headcount by employee type (Full time + part time)

- a. Admin = 80
- b. Support = 202
- c. Faculty = 217
- Total = $499/861 = 58\%$

2) Response rate headcount and % by employee type (Full time only)

- a. Admin = $74/79 = 94\%$
- b. Support = $155/194 = 80\%$
- c. Faculty = $129/154 = 84\%$
- Total = $358/427 = 84\%$

3) Response rate headcount and % by employee type (Part time only)

- a. $141/430 = 33\%$

2016 Response Rates:

1) Response rate headcount by employee type (Full time + part time)

- a. Admin = 70
- b. Support = 205
- c. Faculty = 205
- Total = $480/846 = 57\%$

2) Response rate headcount and % by employee type (Full time only)

- a. Admin = $59/59 = 100\%$
- b. Support = $161/190 = 85\%$
- c. Faculty = $117/152 = 77\%$
- Total = $337/401 = 84\%$

3) Response rate headcount and % by employee type (Part time only)

- a. $144/445 = 32\%$

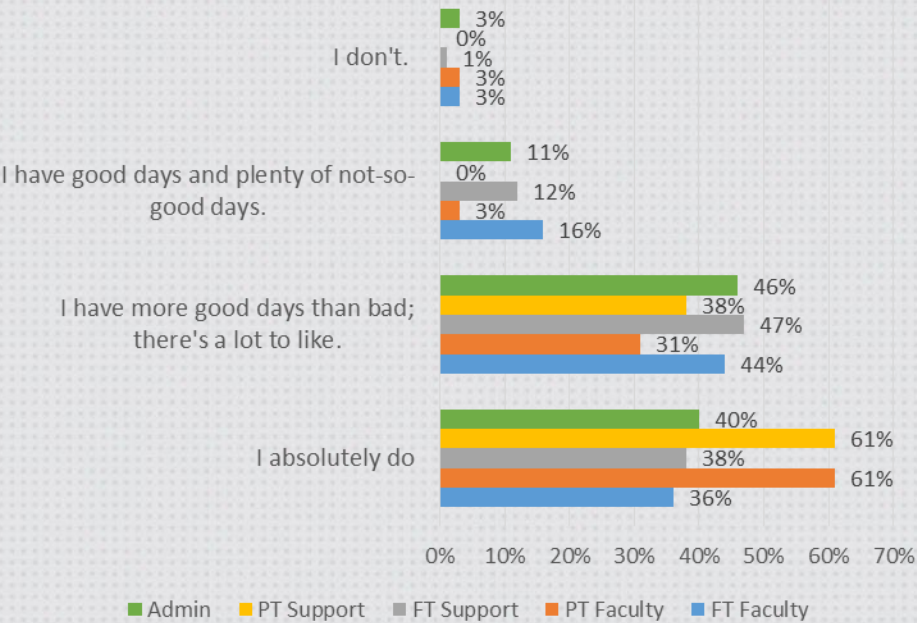
Engagement Summary

Engagement	2016	2014
Highly Engaged	47.8	41.8
Engaged	39.9	47.2
Disengaged	10.9	8.8
Actively Disengaged	2.3	2.1

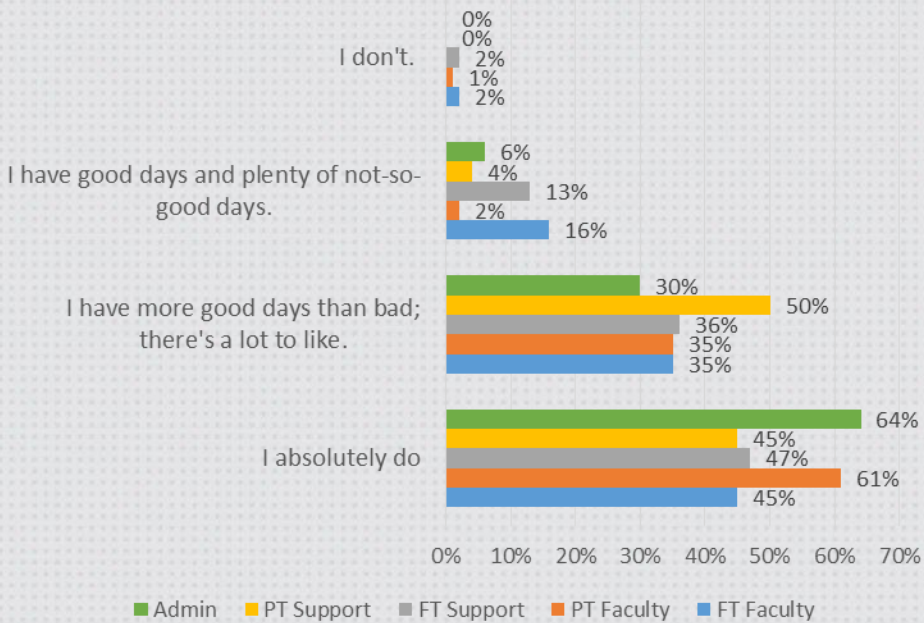
Engagement

Do you love your job?

2014 Results



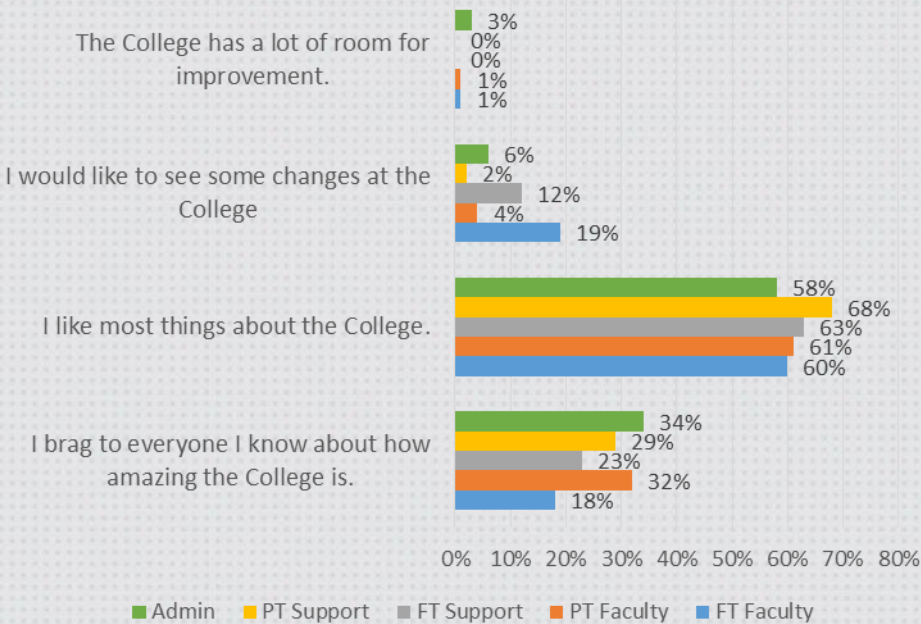
2016 Results



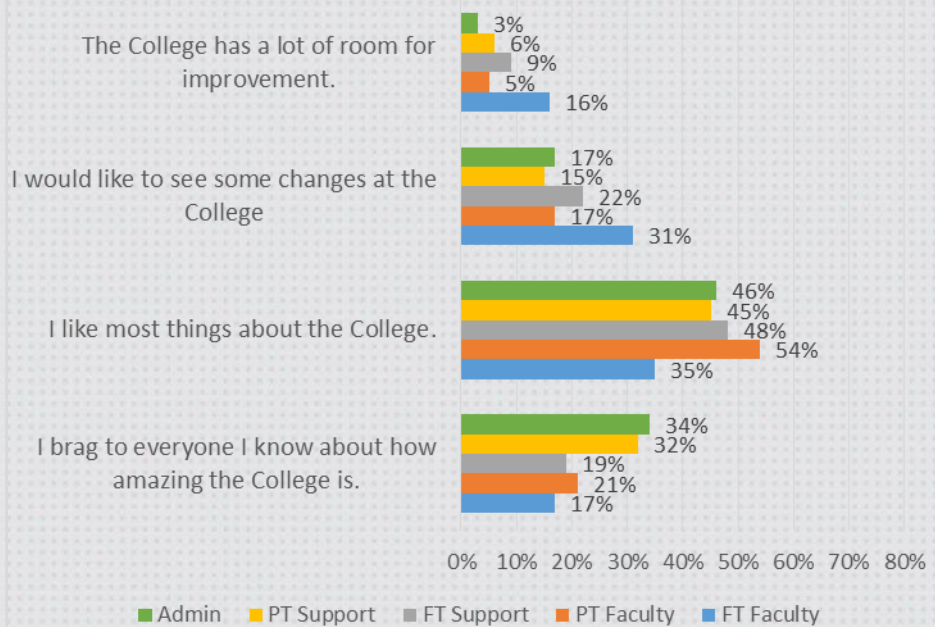
Engagement

How much love do you have for Confederation?

2014 Results



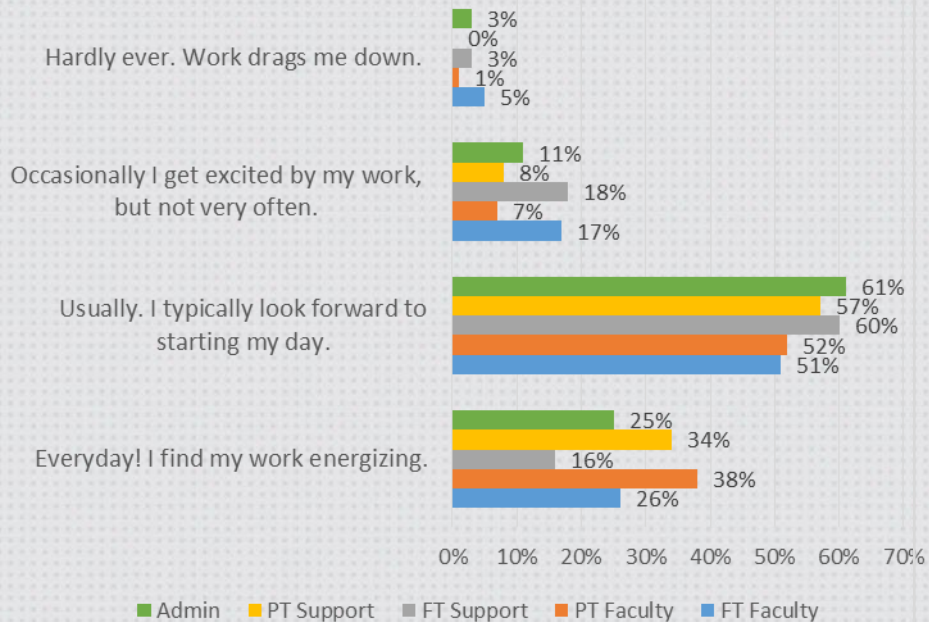
2016 Results



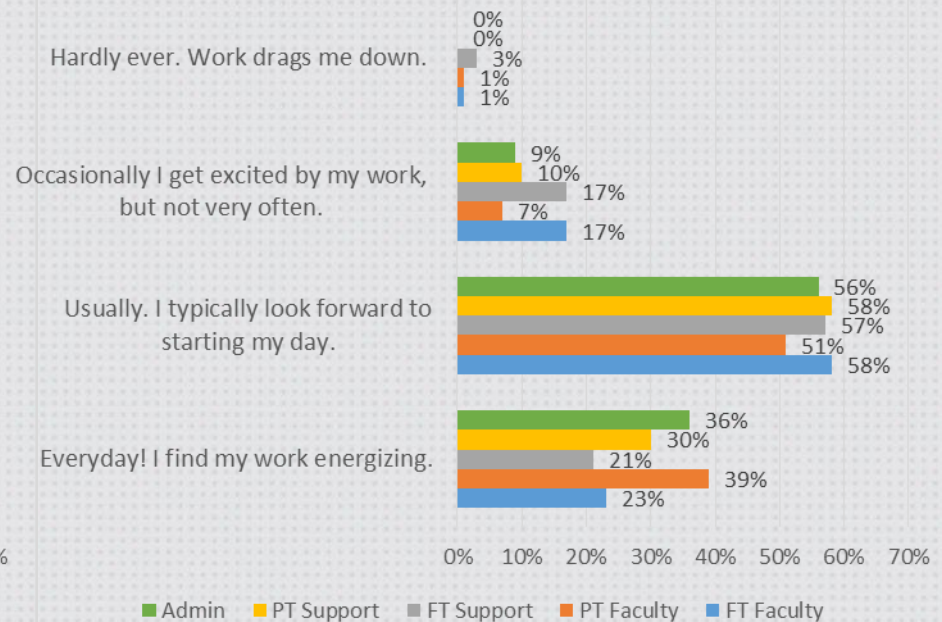
Engagement

How often do you feel excited by the work that you do?

2014 Results



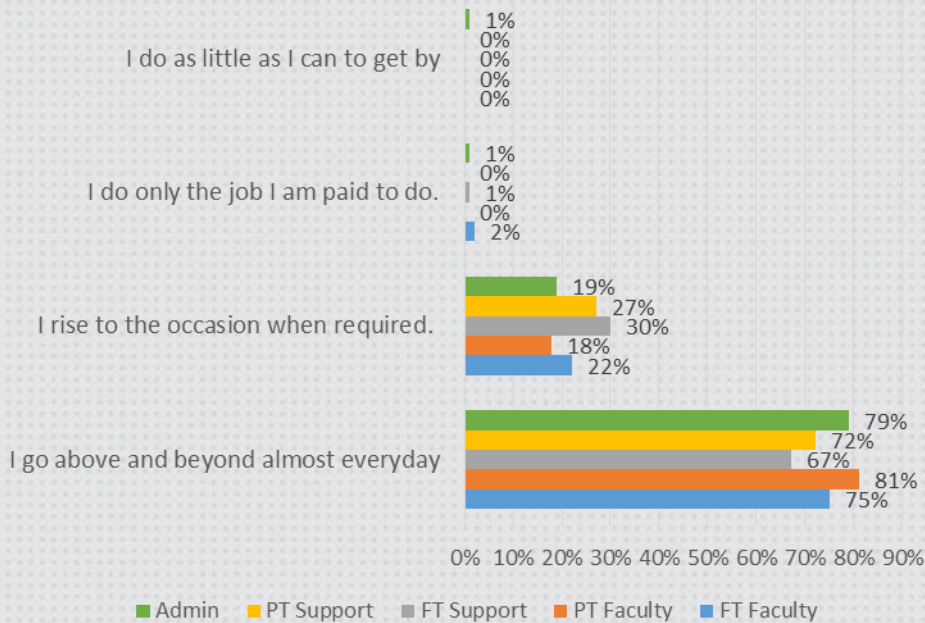
2016 Results



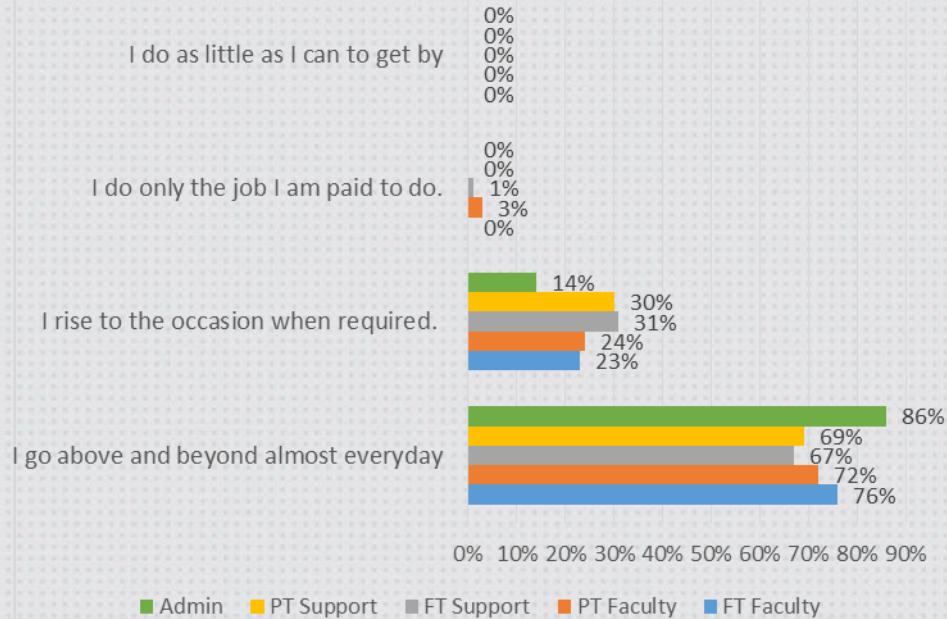
Engagement

How much effort do you typically give on the job?

2014 Results



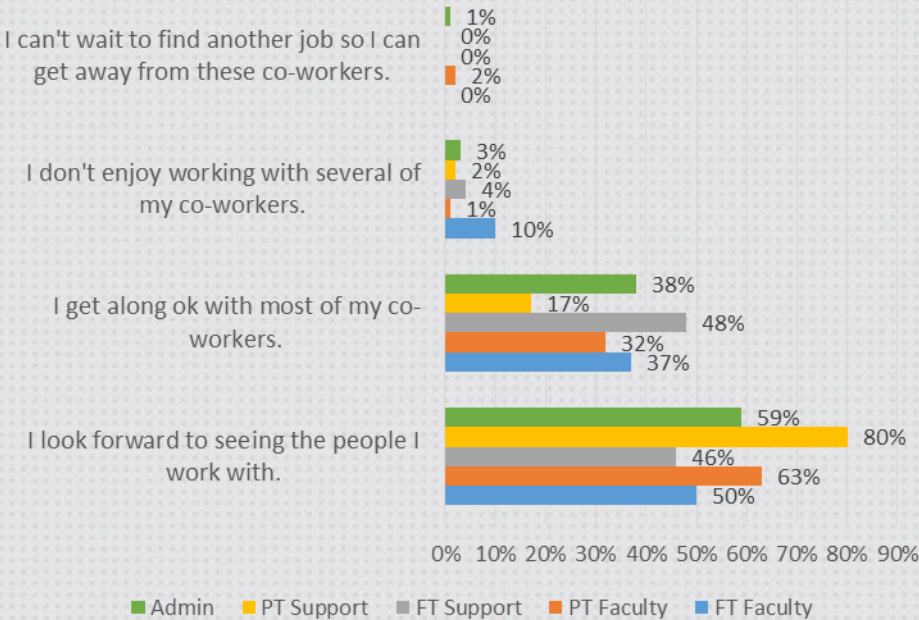
2016 Results



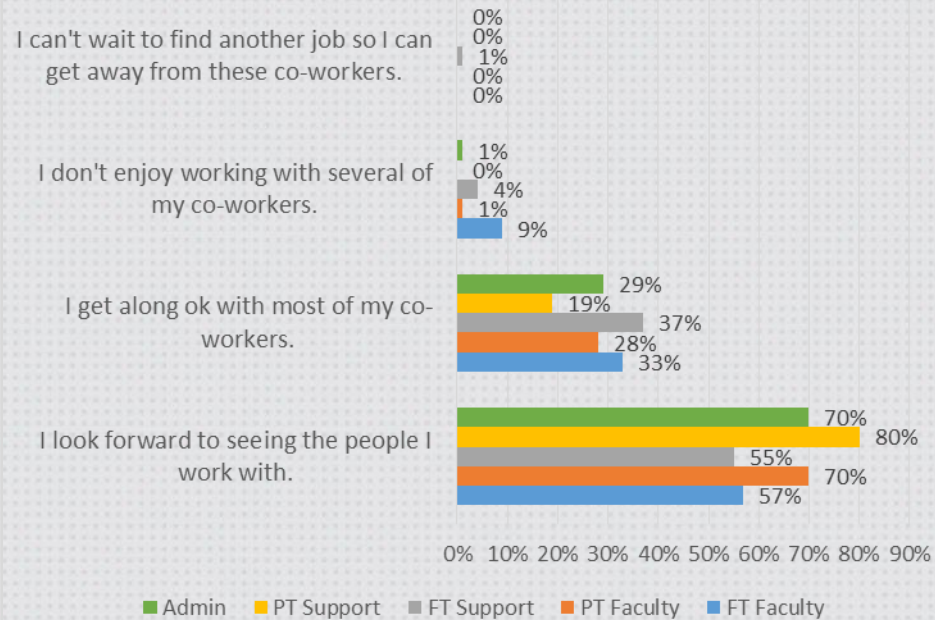
Engagement

How much do you enjoy working with your co-workers?

2014 Results



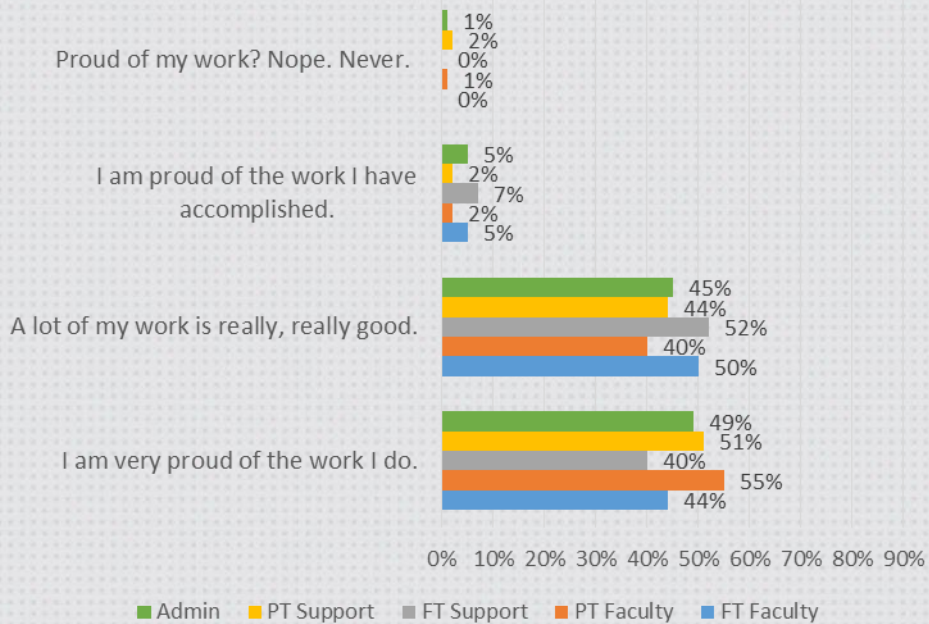
2016 Results



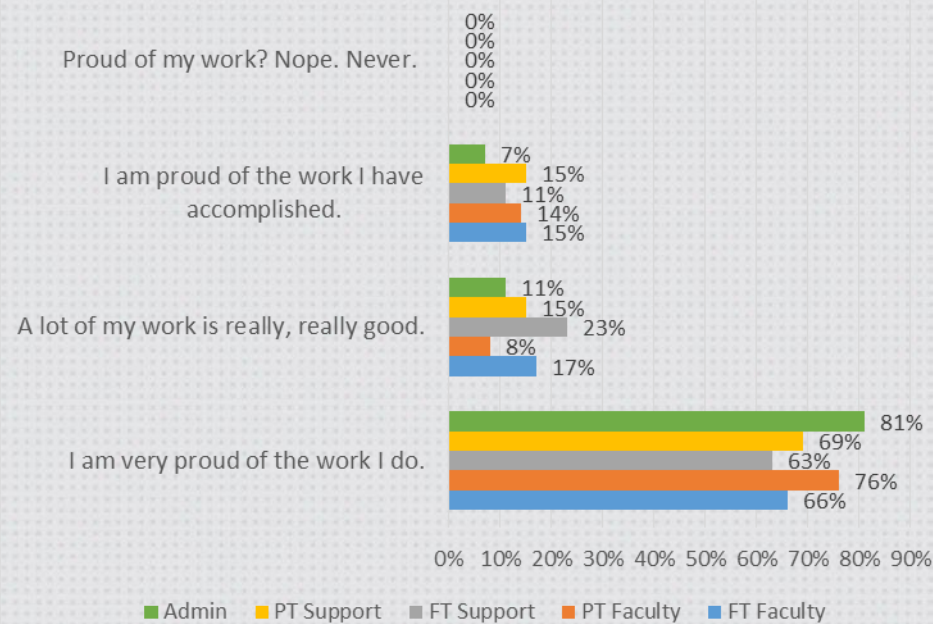
Engagement

Are you proud of the work you do?

2014 Results



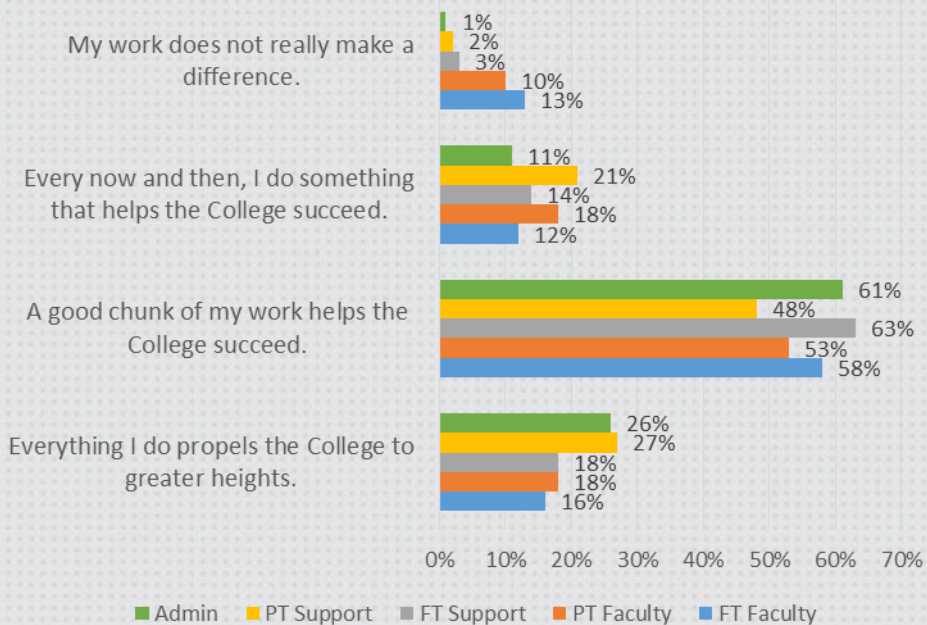
2016 Results



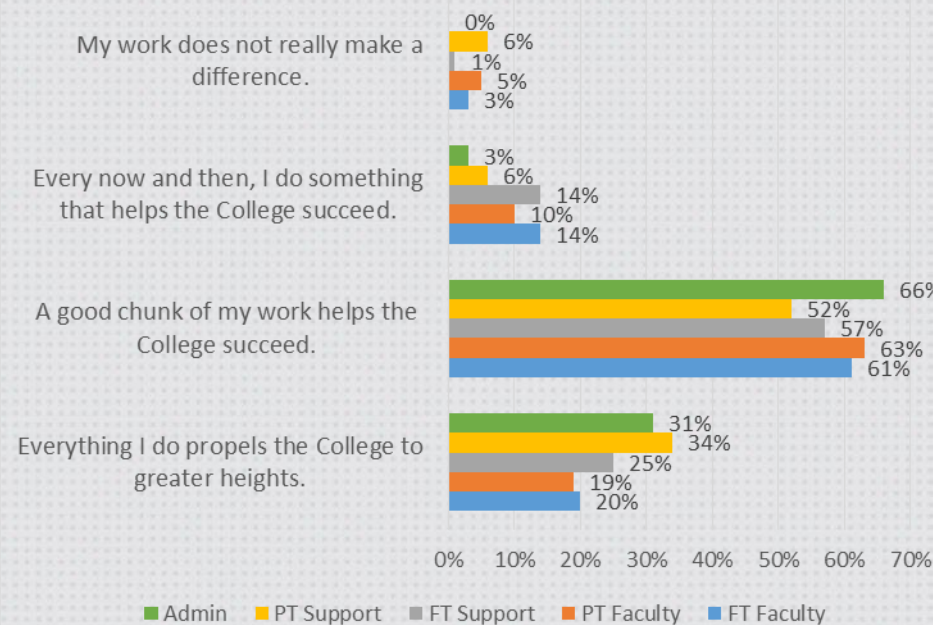
Engagement

Do you feel like your efforts drive the College and Student success?

2014 Results

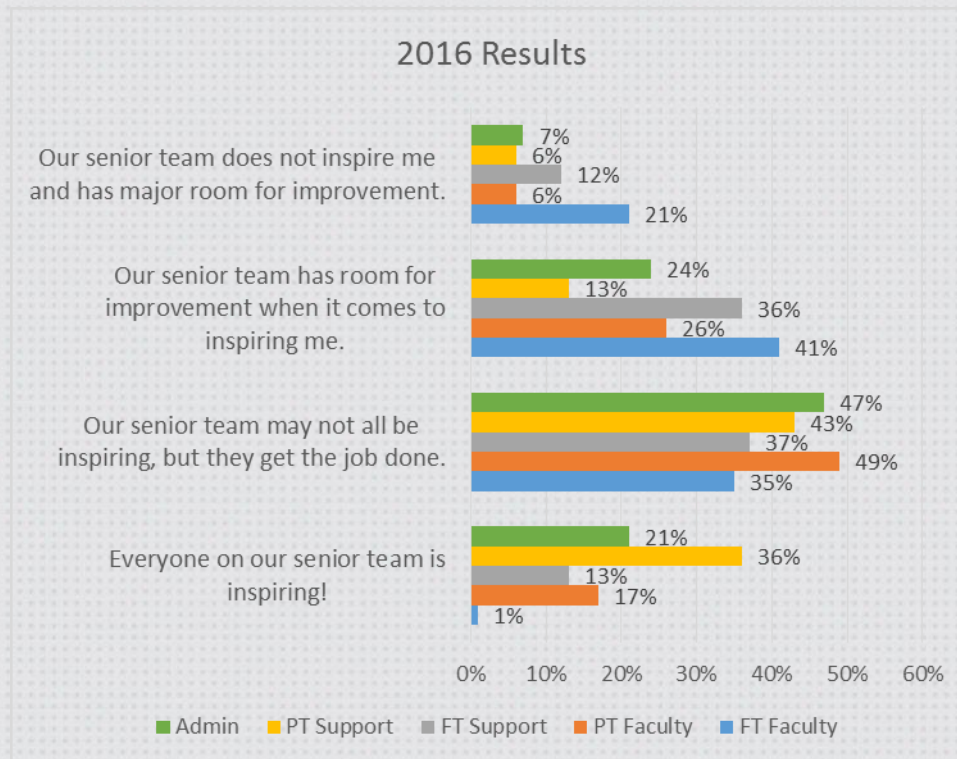


2016 Results



Senior Leadership

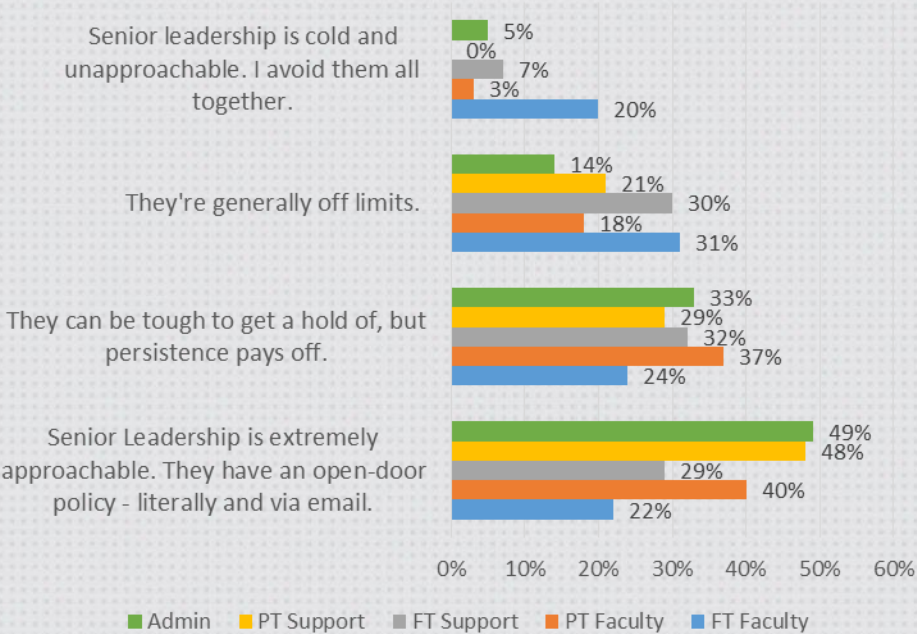
How do you feel about our senior team's ability to inspire you?



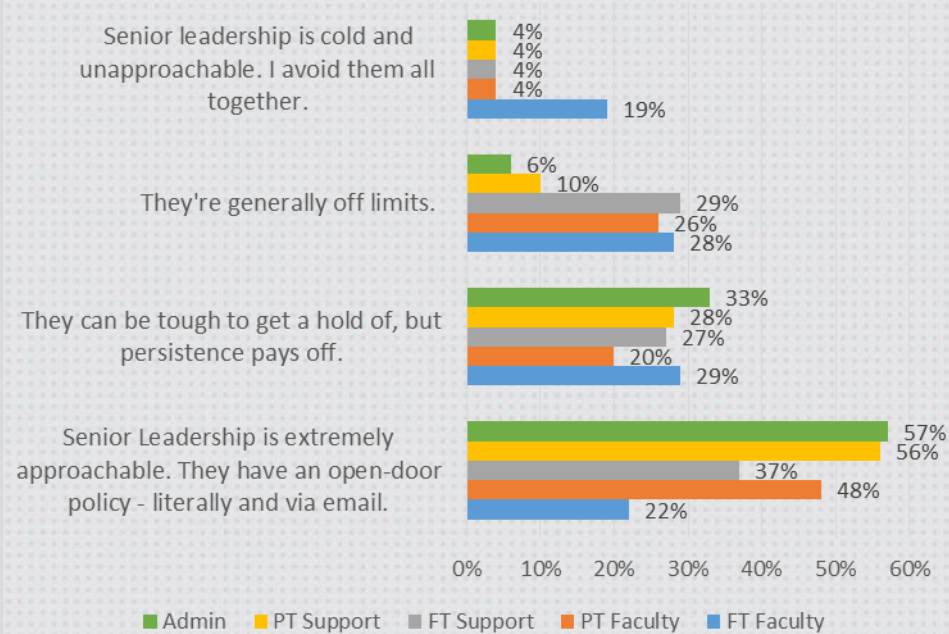
Senior Leadership

How accessible is your senior leadership?

2014 Results



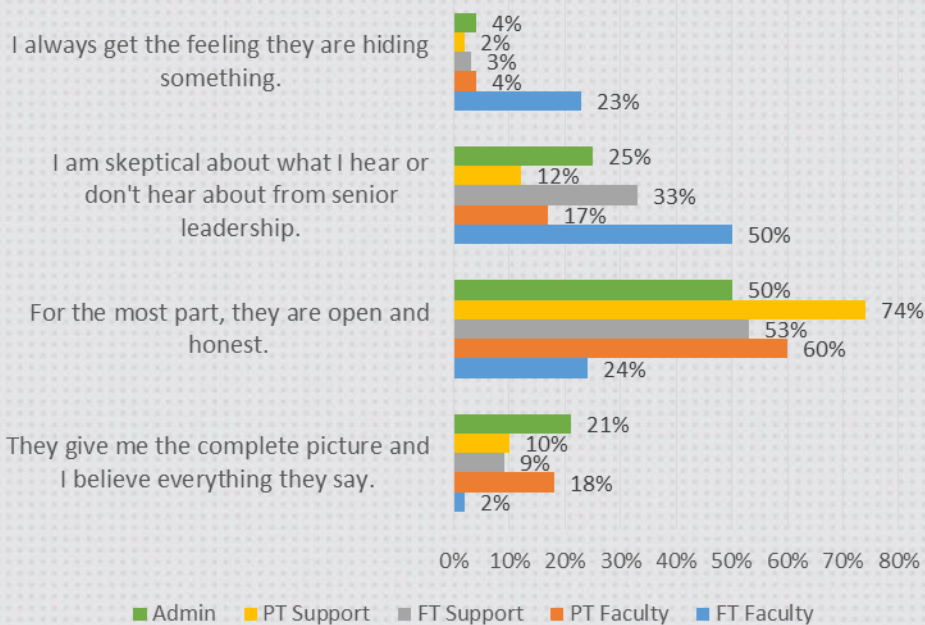
2016 Results



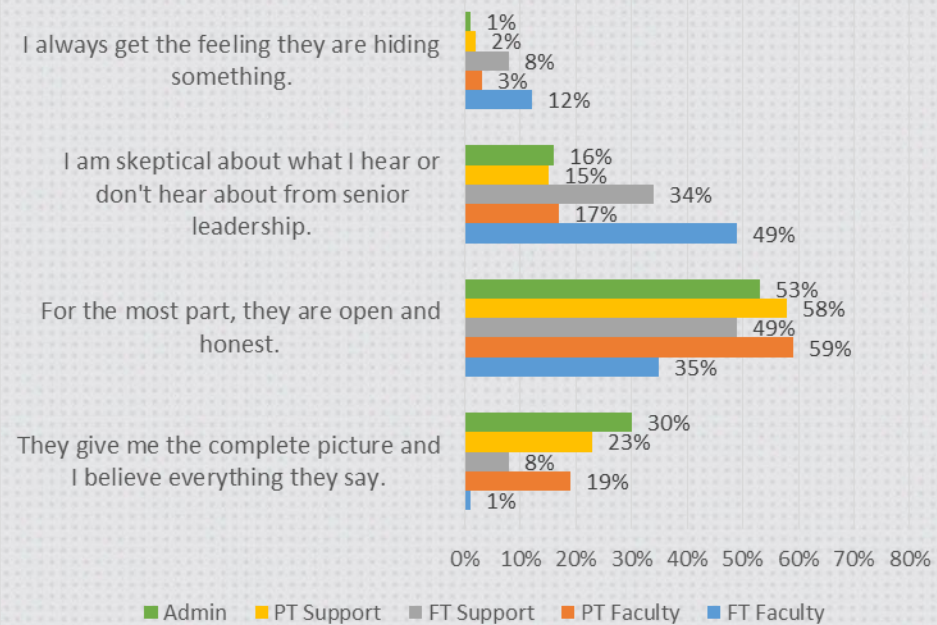
Senior Leadership

How open and honest is your senior leadership team?

2014 Results

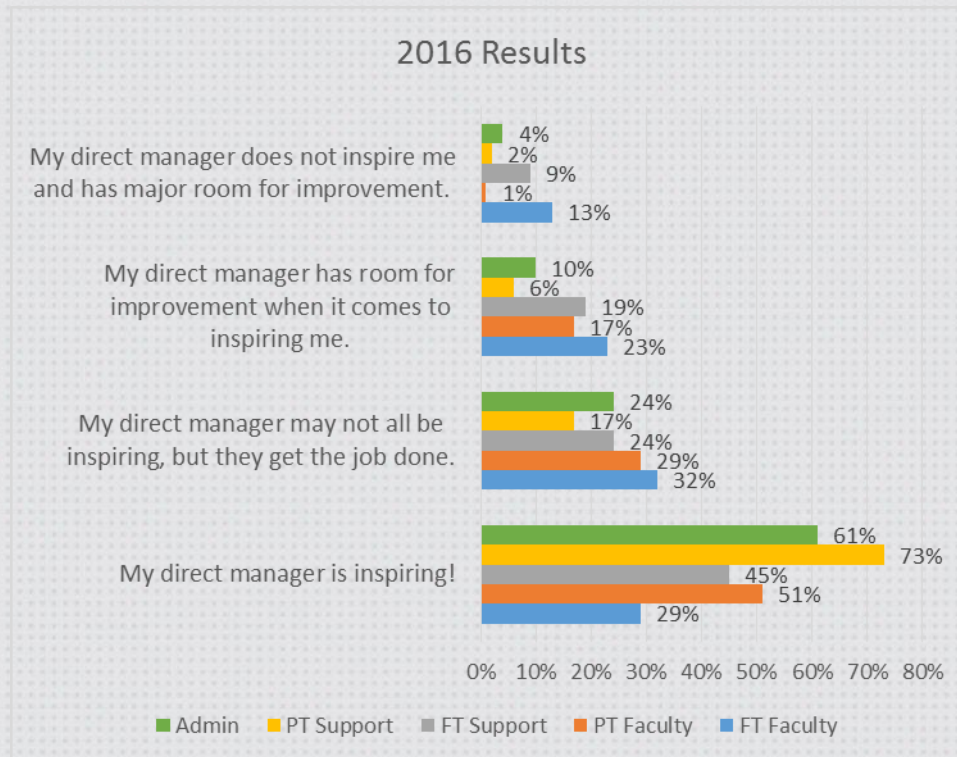


2016 Results



Direct Manager

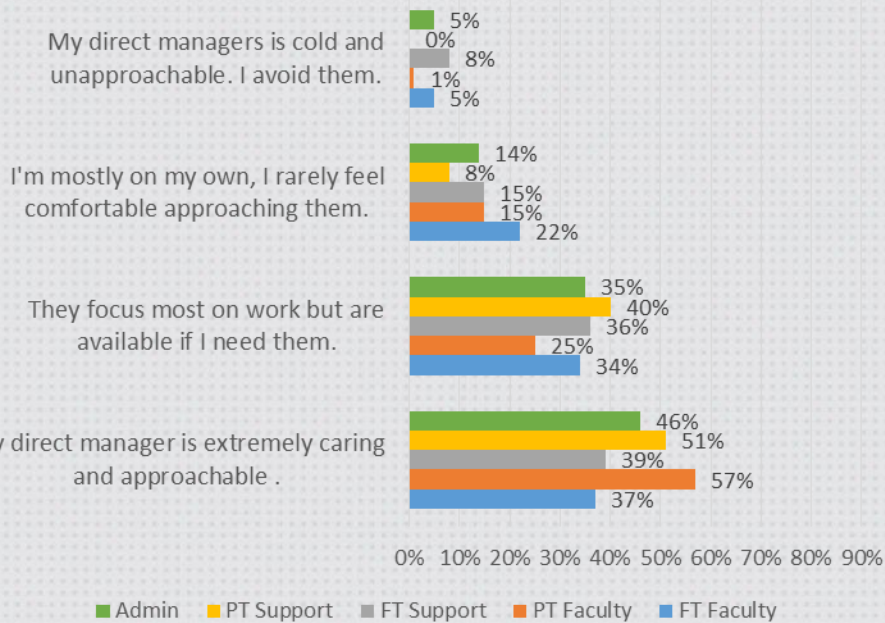
How do you feel about your direct manager's ability to inspire you?



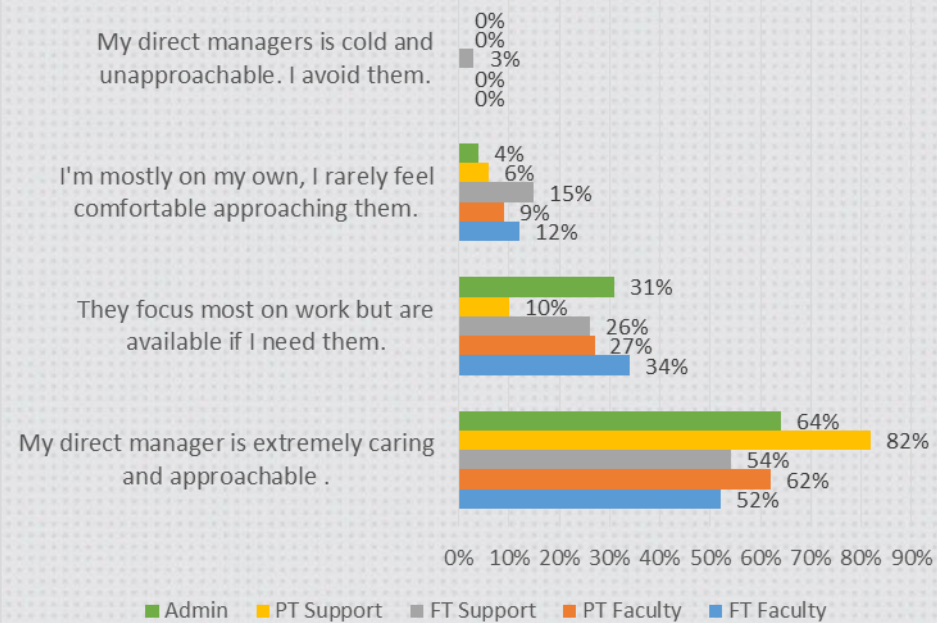
Direct Manager

How approachable is your direct manager?

2014 Results



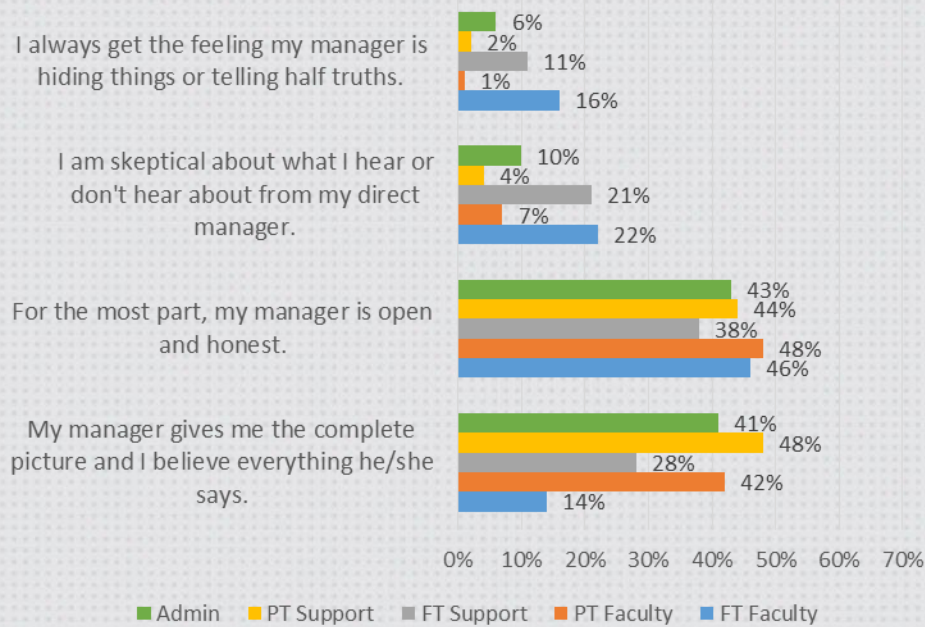
2016 Results



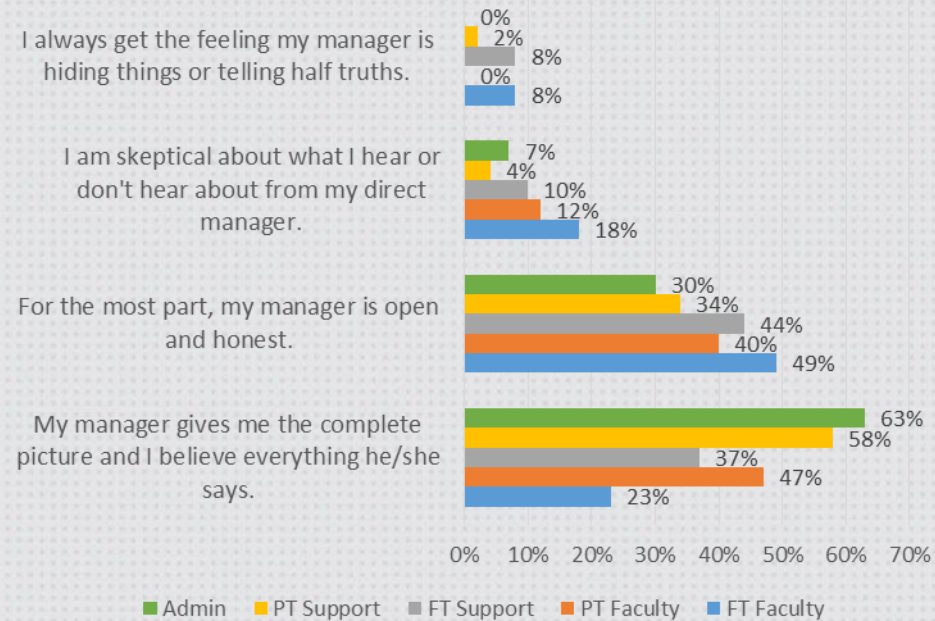
Direct Manager

How honest and open is your direct manager?

2014 Results



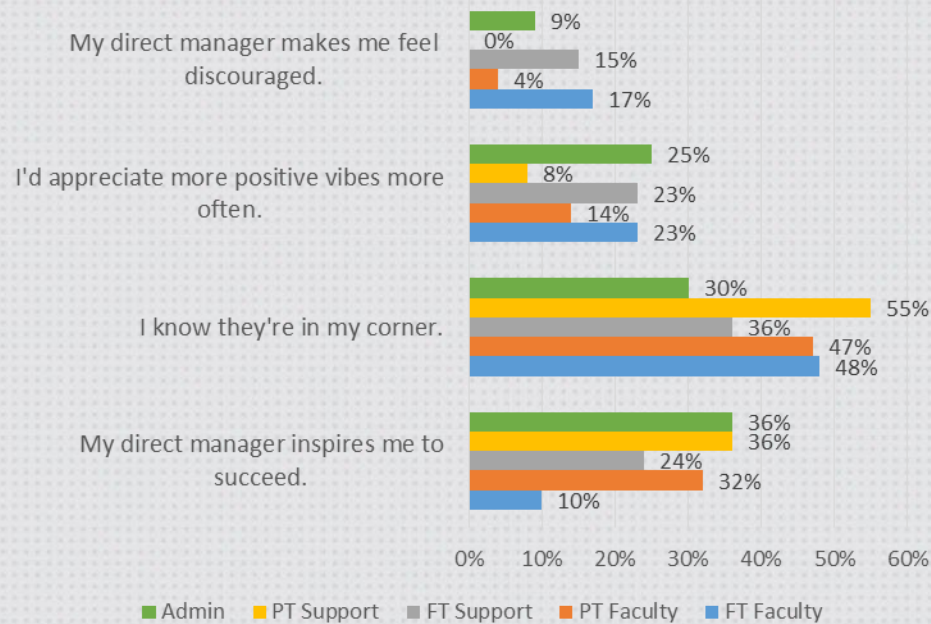
2016 Results



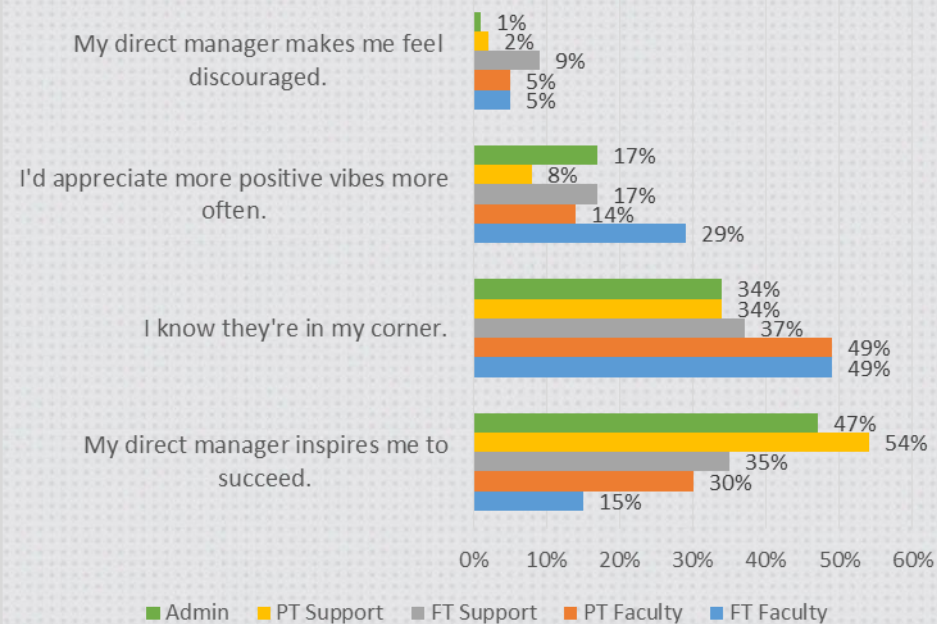
Direct Manager

How encouraging do you find your direct manager?

2014 Results



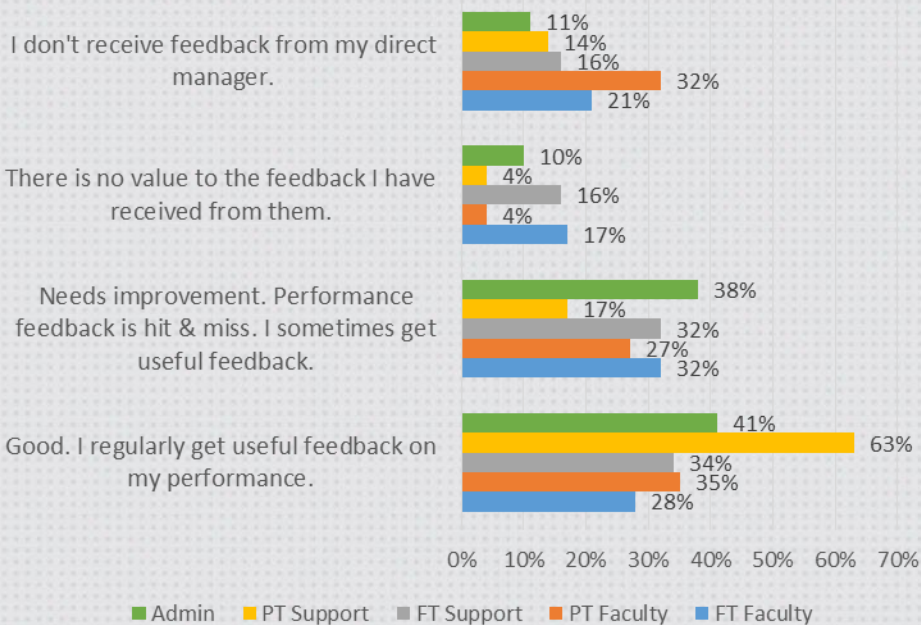
2016 Results



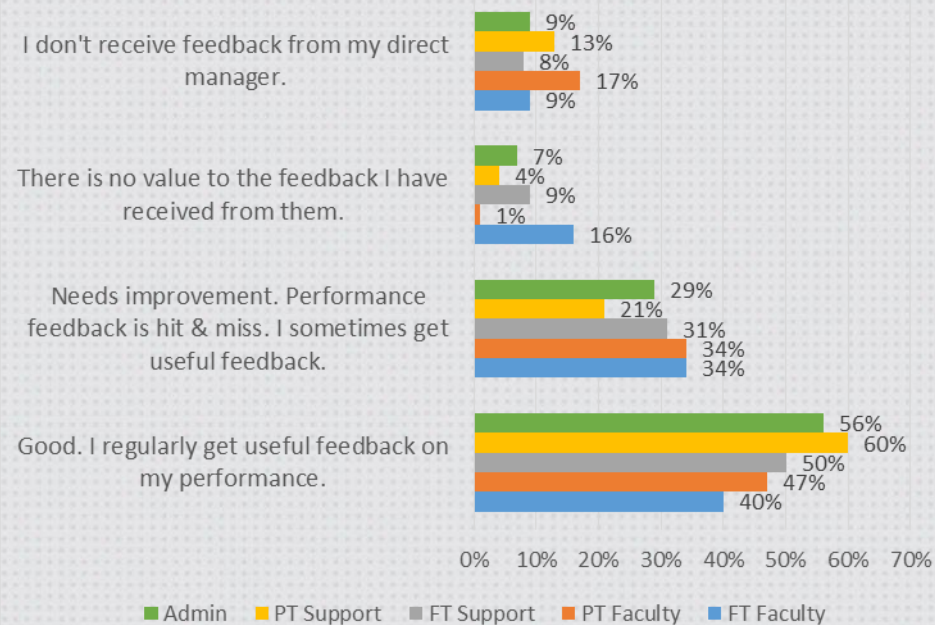
Direct Manager

How useful is their performance feedback?

2014 Results



2016 Results

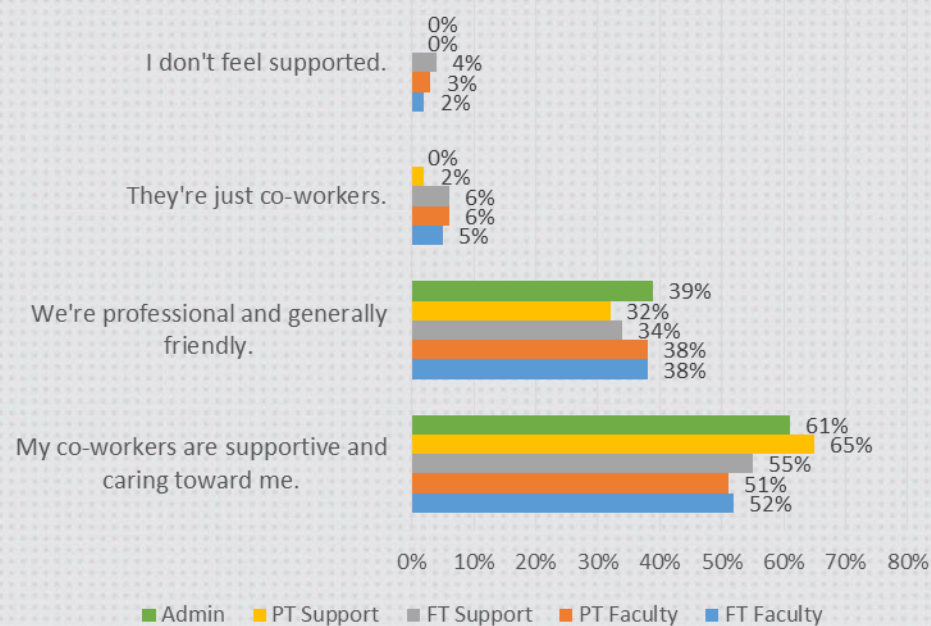
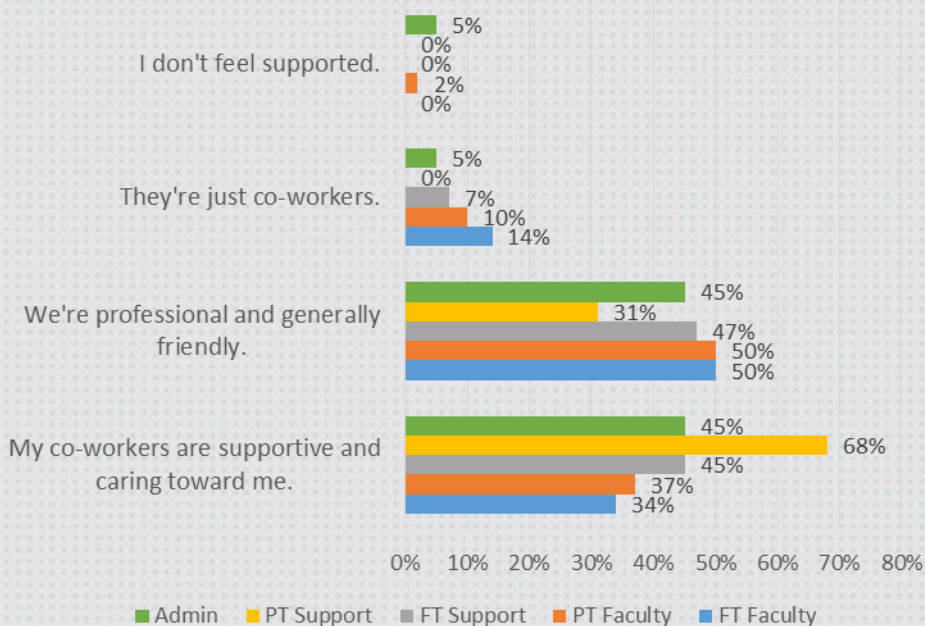


Co-Worker

What kind of relationship do you have with your colleagues?

2014 Results

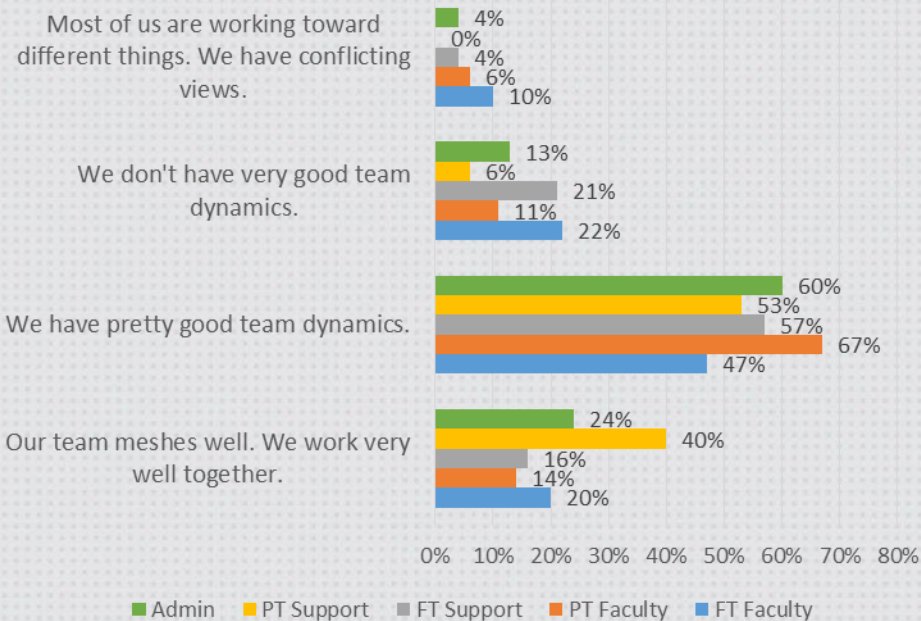
2016 Results



Co-Worker

What are your team's dynamics?

2014 Results



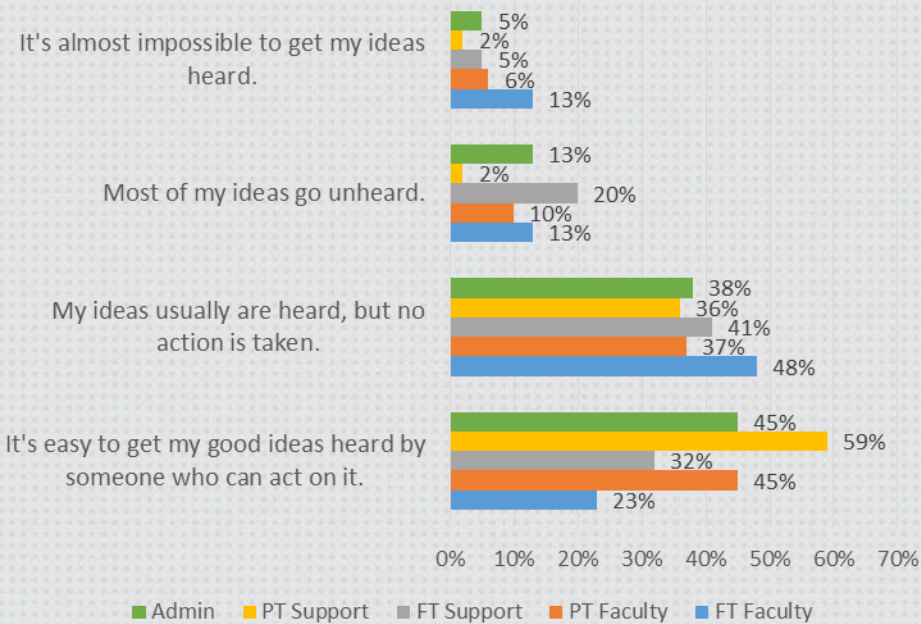
2016 Results



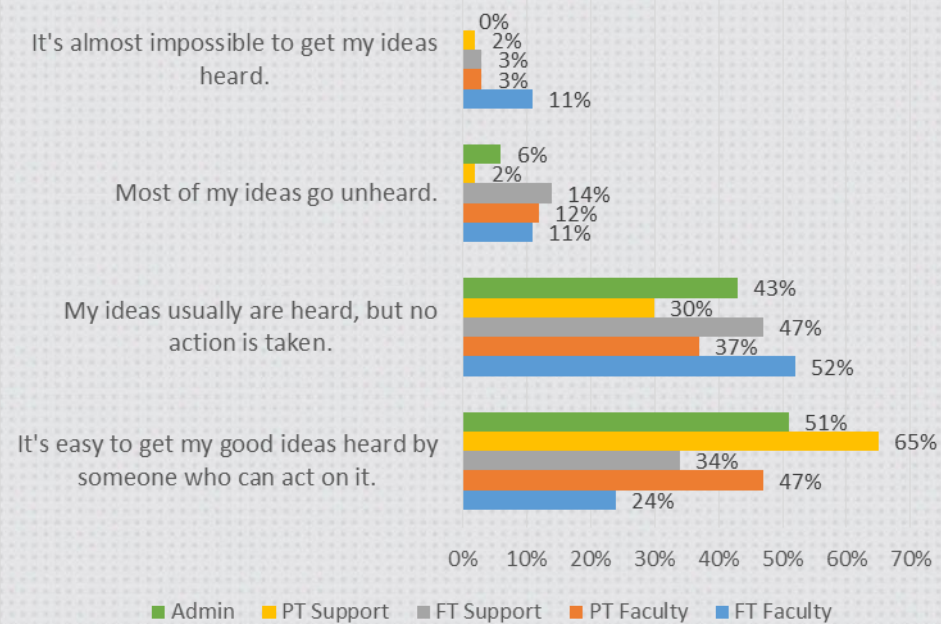
Communication

How easy is it to get an amazing idea heard by the right person at your organization?

2014 Results



2016 Results

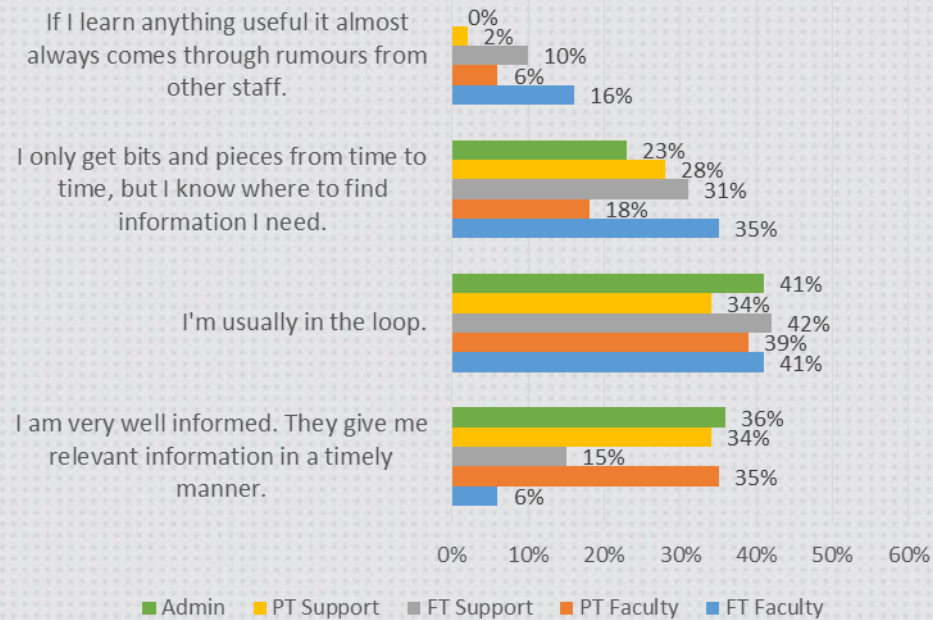
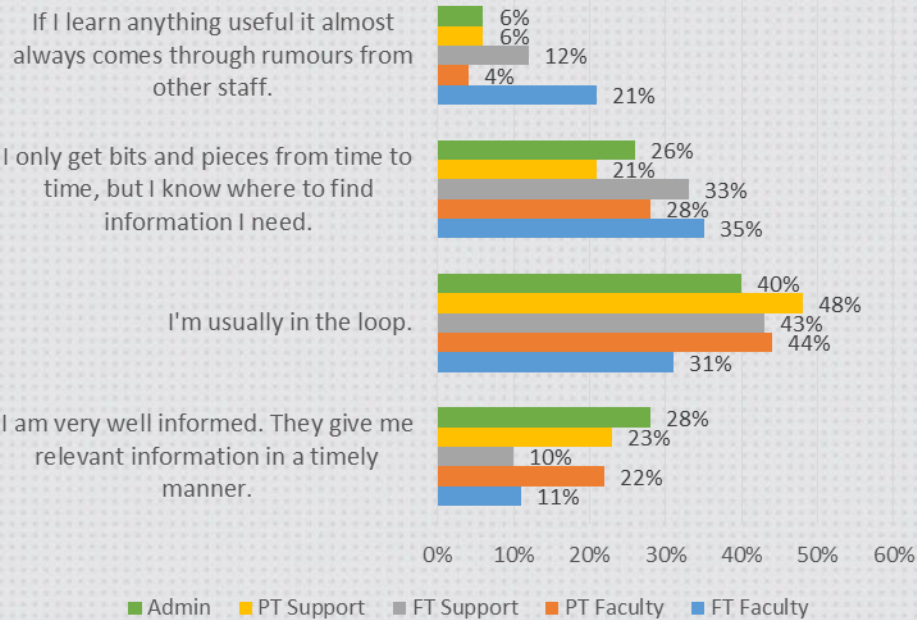


Communication

How well does the College keep you informed?

2014 Results

2016 Results



Empowerment & Career

Do you have the necessary tools and resources to get work done?

2014 Results

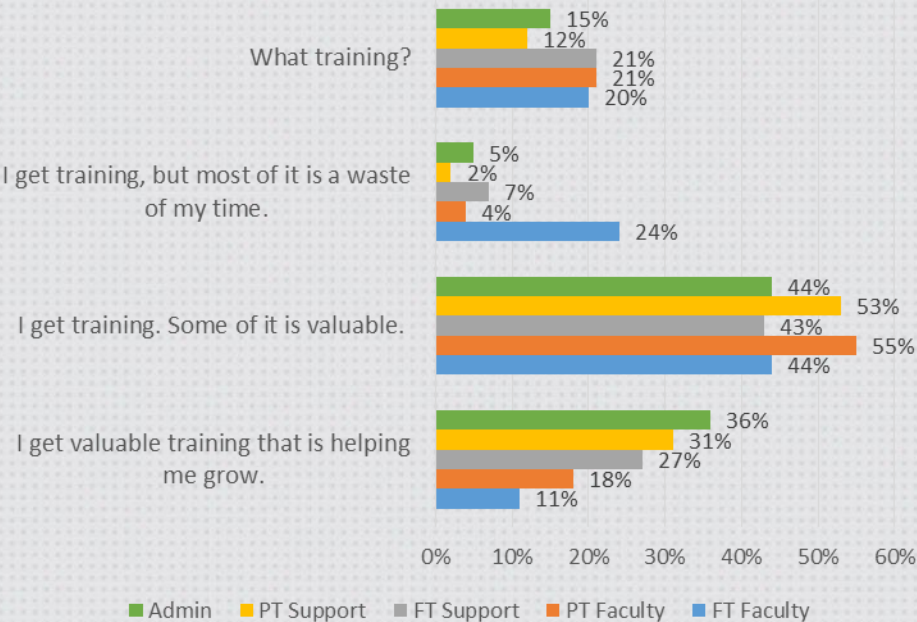
2016 Results



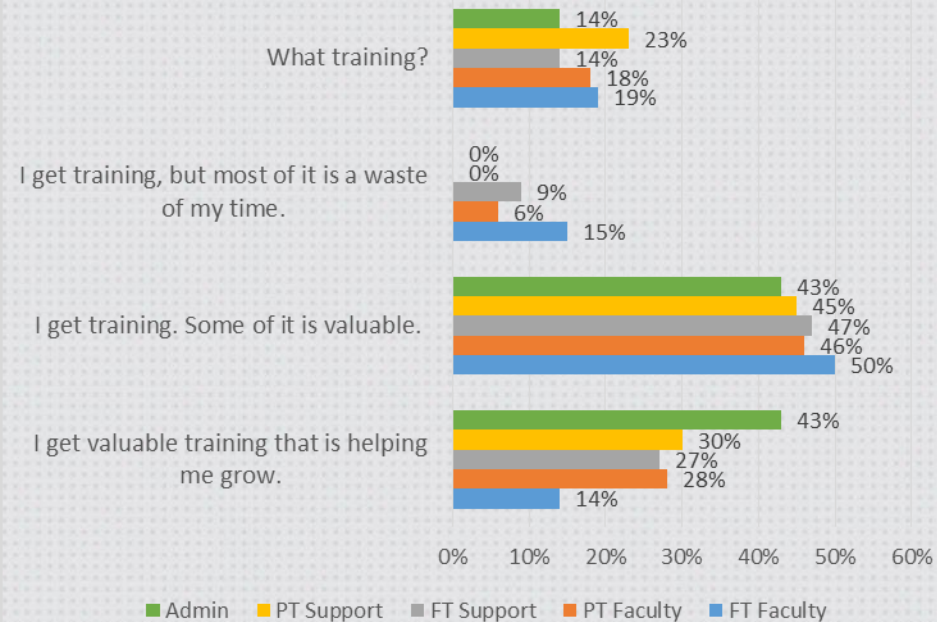
Empowerment & Career

Do you feel that you are getting the training you need to grow and succeed in your career?

2014 Results



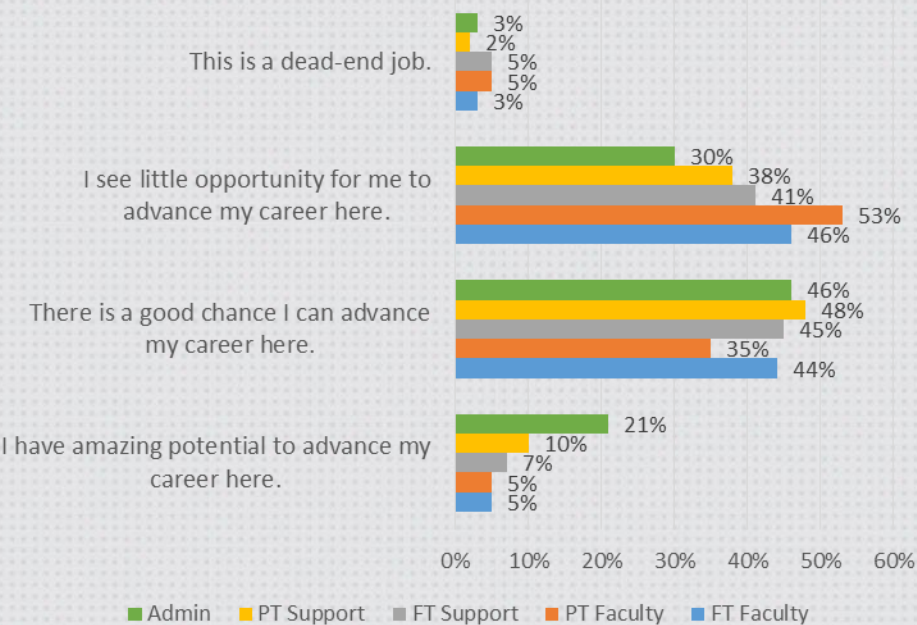
2016 Results



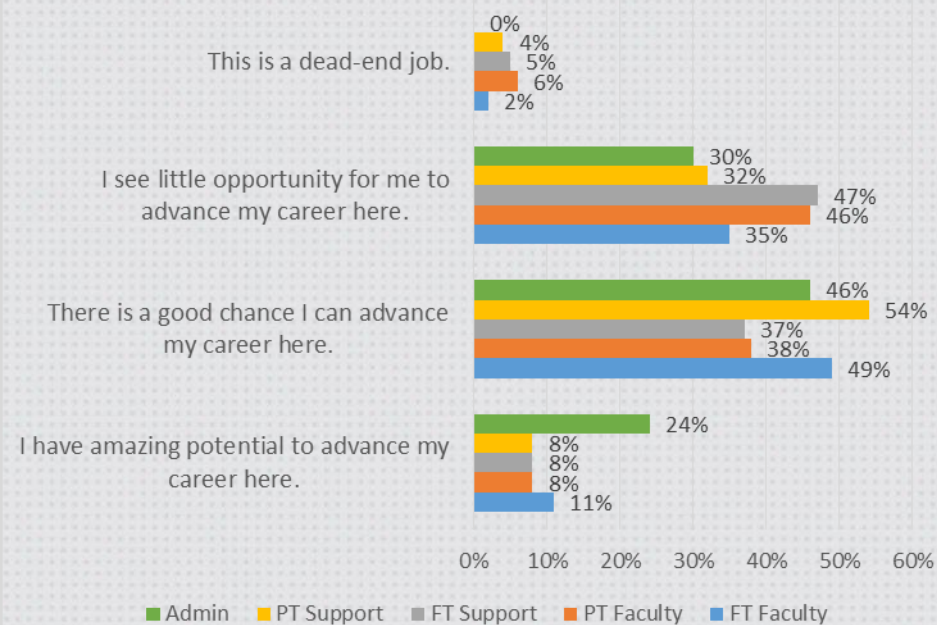
Empowerment & Career

How much career potential does your job seem to have?

2014 Results



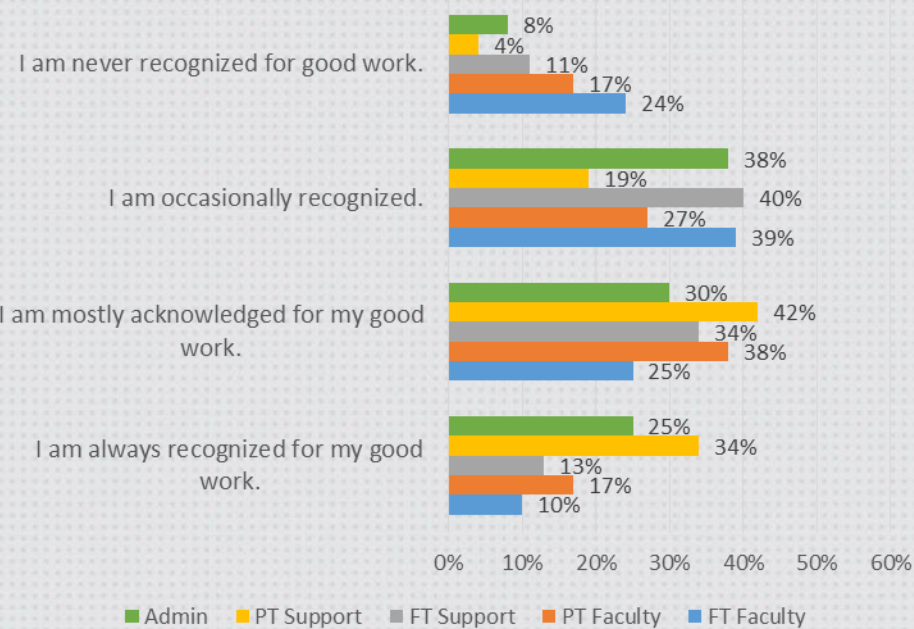
2016 Results



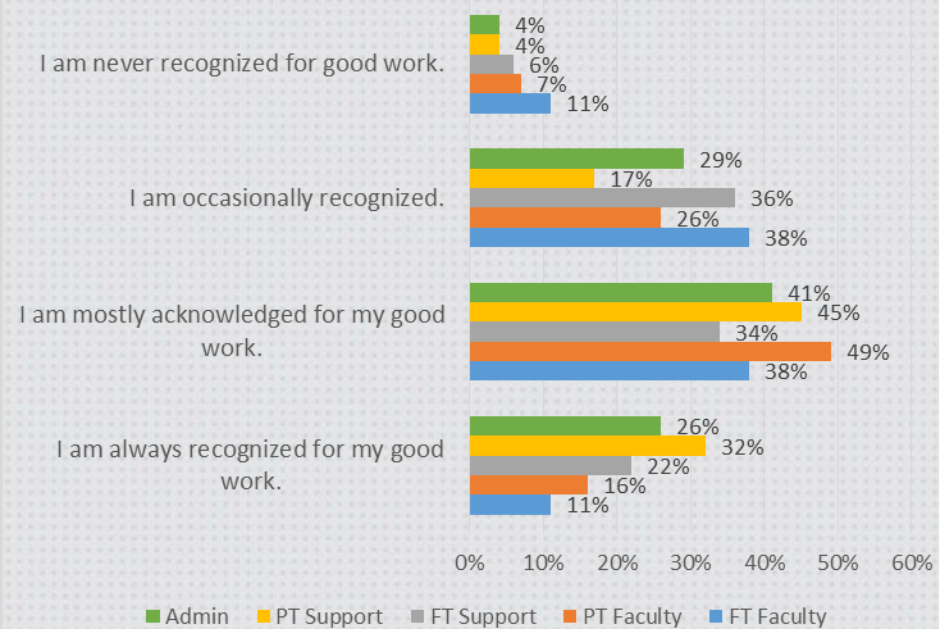
Recognition

How well recognized are your contributions?

2014 Results



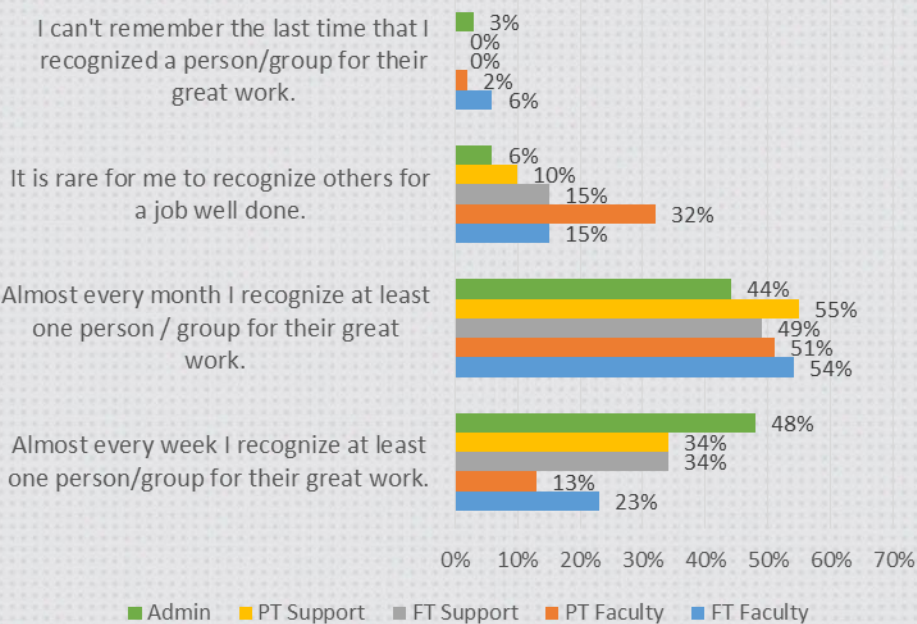
2016 Results



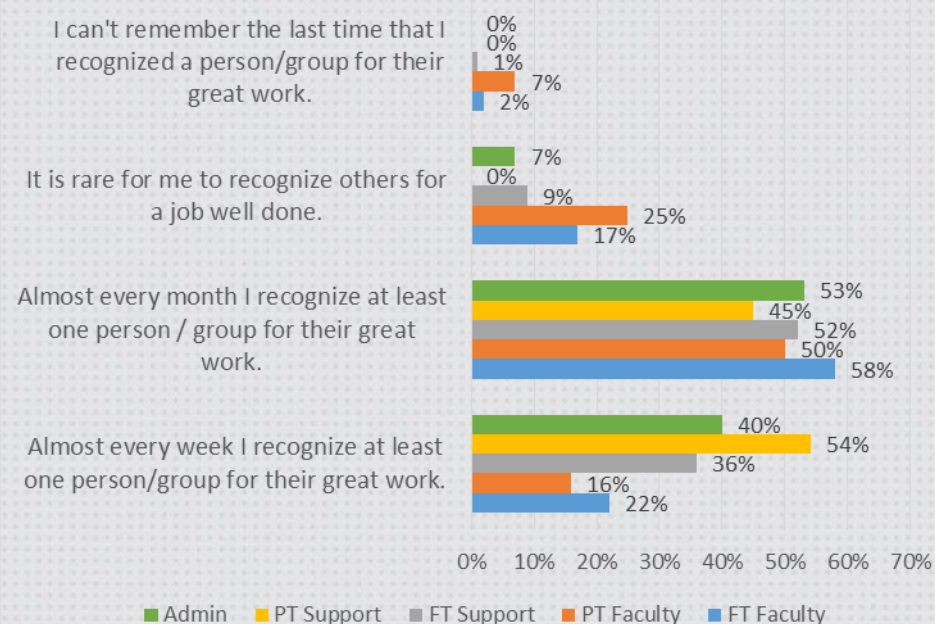
Recognition

How often do you recognize your colleagues for a job well done?

2014 Results



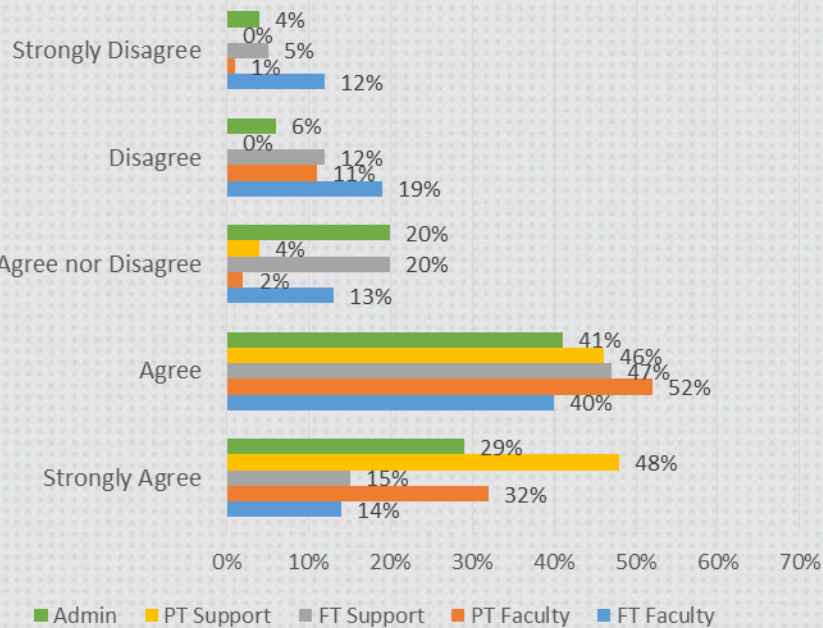
2016 Results



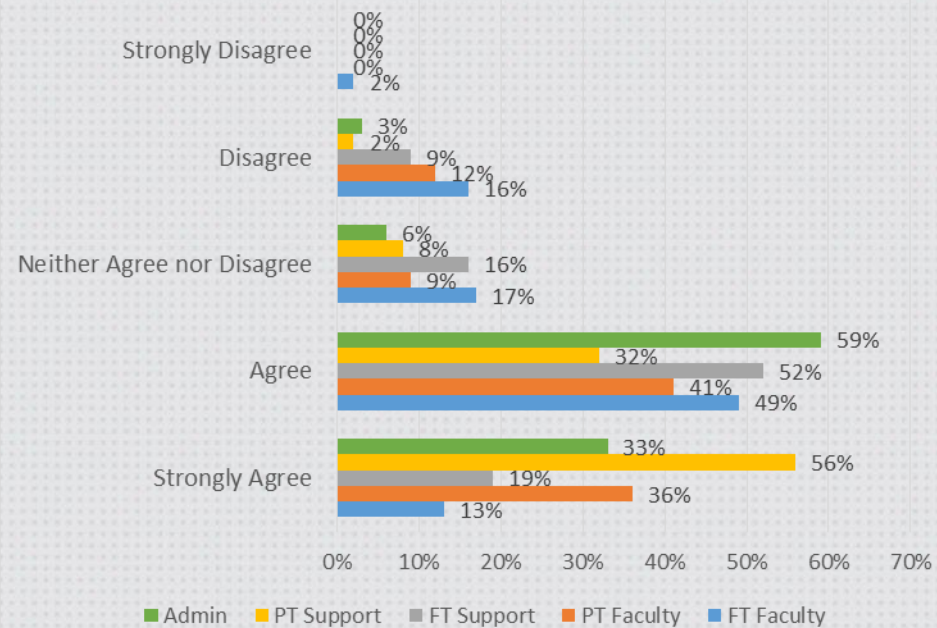
Custom

Overall, employees are treated with courtesy and respect.

2014 Results



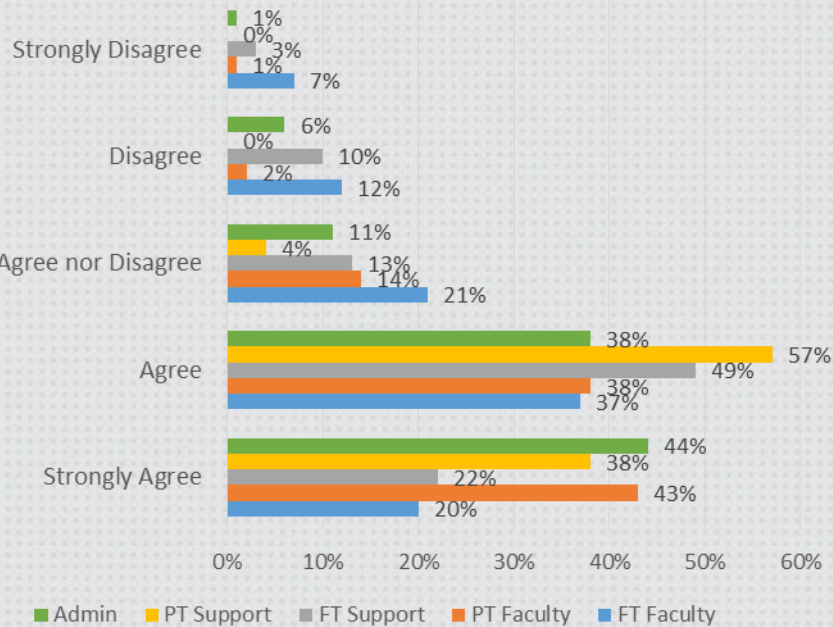
2016 Results



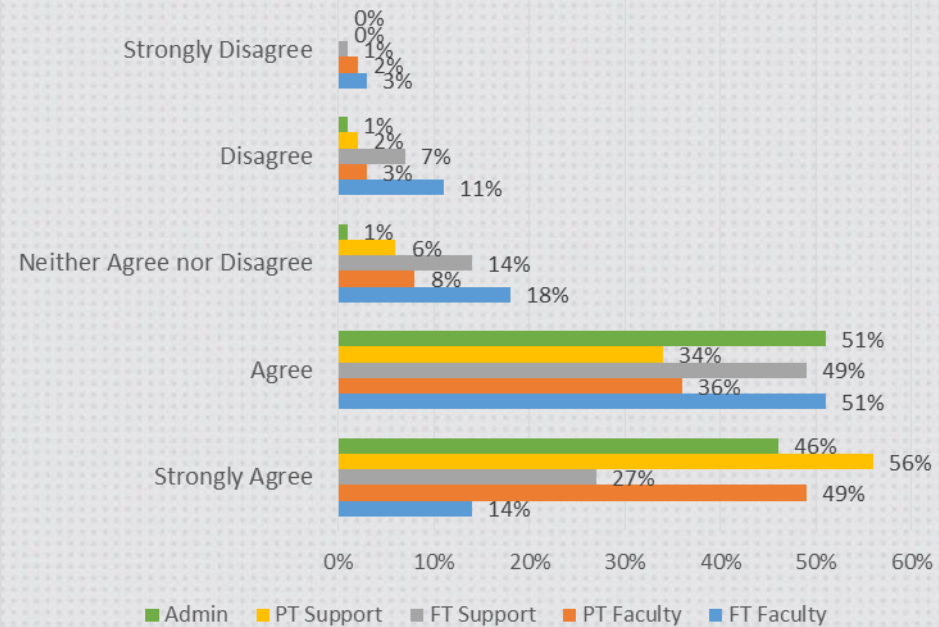
Custom

The College supports a safe and healthy work environment.

2014 Results



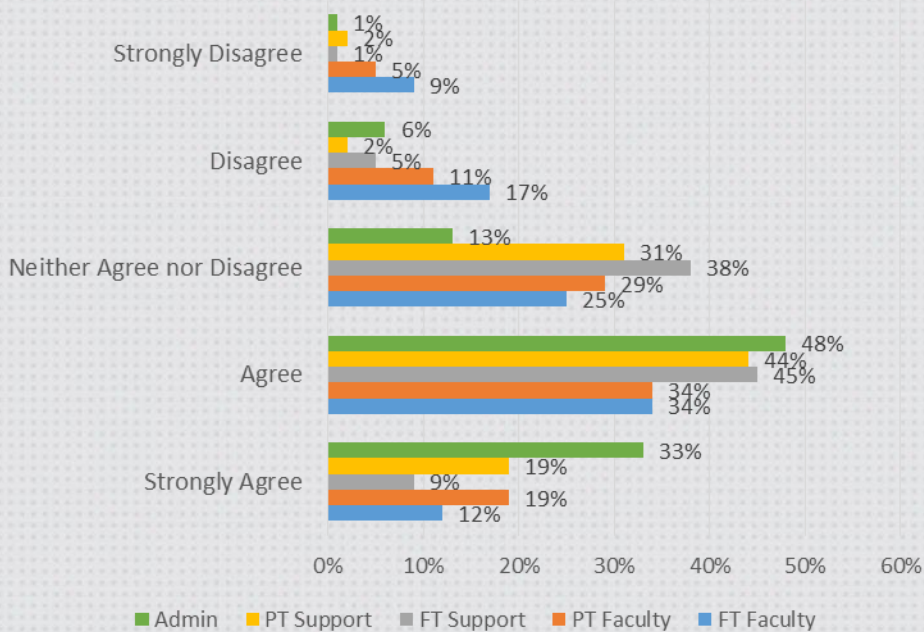
2016 Results



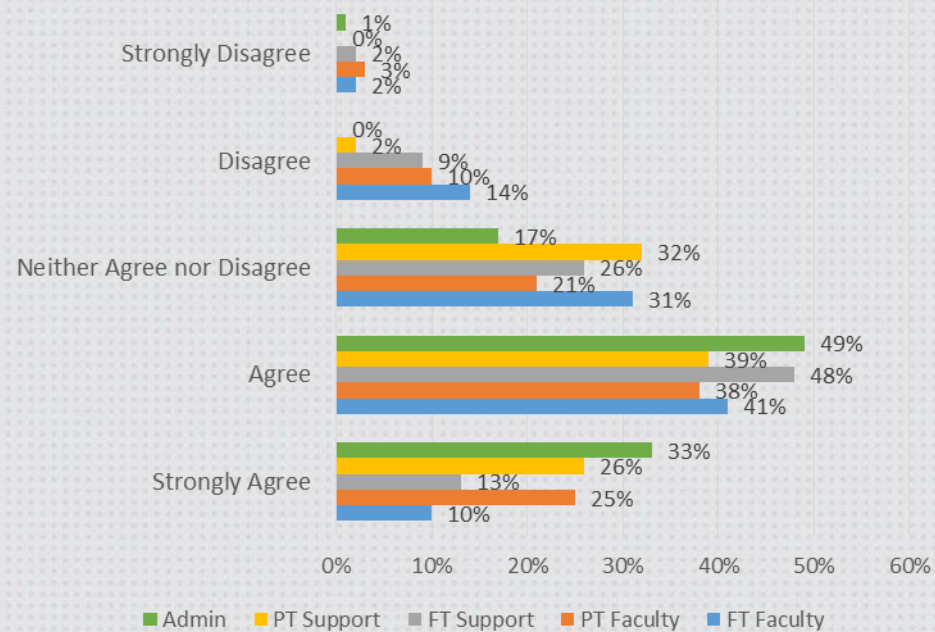
Custom

I know and understand my specific role in the College's Strategic and Academic Plans.

2014 Results



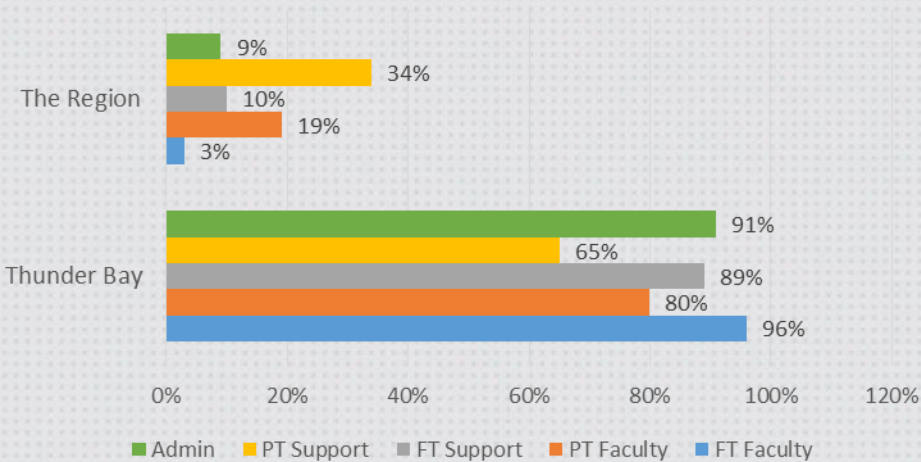
2016 Results



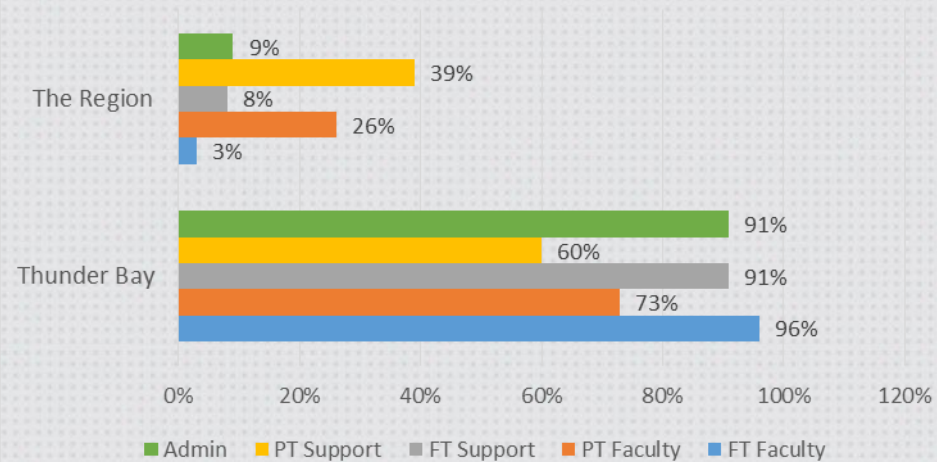
Demographics

My work location is:

2014 Results



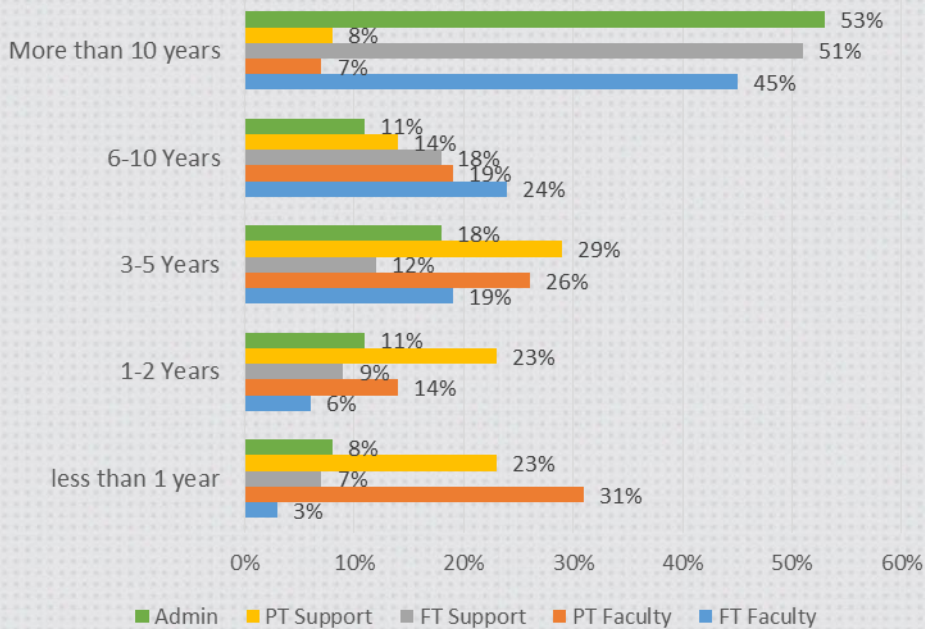
2016 Results



Demographics

How long have you been employed at the College?

2014 Results



2016 Results

