



# Confederation College Community Garden Guidebook 2026



# TABLE OF CONTENTS

- Garden Vision ..... 1
- College Responsibility ..... 1
- Gardener Responsibility ..... 1
- Plot Types ..... 1
- Registration Process ..... 2
- Plot Choice ..... 2
- Gratis Plots + Community Organization Plots ..... 2
- Liability ..... 3
- Inclusivity ..... 3
- Parking ..... 3
- Spring Planting ..... 3
- Restricted Plantings ..... 3
- Fall Harvest ..... 3
- Security and Access ..... 4
- Garden Contact ..... 4
- Shed ..... 5
- Beehive ..... 5
- Watering ..... 5
- Maintenance ..... 5
- Organic Garden ..... 5
- Garden Rules ..... 6



## GARDEN VISION

The Confederation College Community Garden supports the community of Thunder Bay with accessible land to grow organic, sustainable, and locally produced food while providing the opportunity to learn and experience gardening.

## CONFEDERATION COLLEGE RESPONSIBILITY

Confederation College is responsible for:

- Providing the land to be gardened
- Providing limited parking and applicable parking passes
- Providing water for the garden
- Maintaining the fence surrounding the garden
- Setting preliminary rules
- Collecting registration forms, fees, and assigning plots
- Providing a Garden Contact to be the main contact for gardeners

## GARDENER RESPONSIBILITY

Gardeners are responsible for:

- Identifying issues or requests for the garden to the Garden Contact
- Ensure walk-in gate is securely locked when leaving
- Comply with all Garden Guidelines and rules, as well as provincial and federal laws

## PLOT TYPES

These are the different garden plot types available:

### **Community Garden Plot**

General use, in ground garden plot, approximately 2.5 meters by 4.5 meters

24 Available

\$25.00 per plot per season

### **Raised Garden Planter**

Wood raised garden planter on concrete pavers with easy access to concrete paver pathway

8 Available

\$25.00 per planter per season

### **Large Community Garden Plot**

In ground plots for larger group gardening, approximately 10.5 meters by 5.5 meters

3 Available

\$25.00 per planter per season

### **Student Garden Plot**

Smaller plots available for Confederation College students

10 Available

No Cost

## REGISTRATION PROCESS

Any gardener that would like a plot in the garden must:

1. Review the Garden Guidebook 2026 and Garden Map.
2. Email [sdg@confederationcollege.ca](mailto:sdg@confederationcollege.ca) with the type of plot you would like to register for and number of plots.
3. The Garden Contact will electronically send you the Garden Use, Waiver of Liability, Release and Indemnification Agreement to be completed electronically. This form will include your total cost and assigned plot(s).
4. Provide payment for your plot(s) through one of the following methods:
  - a. Electronic Payment: a payment link will be sent to you, this link will allow you to pay via credit card.
  - b. Cheque Payment: can be mailed to:  
Confederation College Community Garden  
Shuniah Building  
1450 Nakina Drive  
Thunder Bay ON P7B 0E5
5. Once your payment is received you will receive an introduction email to the community garden with information about access and features.

By completing and signing the registration form and liability form, gardeners agree to follow the garden rules and instructions provided outlined in this Guidebook and by the Garden Contact. In future years, returning gardeners will be given first priority for a plot, provided they followed the garden rules in previous years.

Plots cannot be given away by a gardener. Plots that are not used will be given to a gardener that has completed a registration form and paid the fee. If a gardener wishes to trade or change plots, they must contact the Garden Contact for permission to do so.

## PLOT CHOICE

Returning gardeners will be given first priority for a plot, provided they followed the garden rules in previous years. Garden plots will be given out on a first come first served basis, as registration forms are received. The garden map with plot assignments will be made available after registration is complete, through the Garden Contact.

## GRATIS PLOTS

The plot fee may be waived for individuals who are unable to pay. Interested individuals should contact the Garden Contact regarding information on gratis plots.

## COMMUNITY PARTNER / ORGANIZATION PLOTS

Plots are available for community partners and community organizations. Interested partners should contact the Garden Contact for further details.

## LIABILITY

All gardeners that participate in the Confederation College Community Garden do so at their own risk. All participants must sign a waiver of liability prior to participating. All participants entering the garden must complete a waiver.

## INCLUSIVITY

The garden is an inclusive community space and as such there is zero tolerance for discrimination on the basis of race, creed, colour, national or ethnic origin, religion, marital status, age, sex, sexual orientation, gender expression, gender identity, disability, or military status in its garden membership and the administration of its programs.

## PARKING

A parking pass is required for the garden. Parking for the 2026 gardening season is available from May 30<sup>th</sup> to October 31<sup>st</sup>.

One gardener parking pass will be given to each registered gardener that requests a pass. This parking pass allows you to park in the space near the garden entrance or in Green Lot A. This parking pass will only be valid from the day the pass is received until October 31<sup>st</sup>.

Ensure that the gardener parking pass is visible in your vehicle at all times when parked on campus. If you do not have the parking pass displayed or you are parked in an undesignated area you can be ticketed. No vehicles can be left overnight.

Gardener parking passes are for community gardening purposes only and are not for staff or student parking.

## SPRING PLANTING

Once the garden is open, gardeners are able to plant their plots at will. If you are unable to plant your plot or do not want your plot after you have registered, please notify the Garden Contact who can reassign your plot.

## RESTRICTED PLANTINGS

Gardeners may not grow Cannabis or marijuana products in the garden. Gardeners may not grow any plants considered illegal or invasive under provincial and/or federal law. Learn about invasive plants here: [www.ontarioinvasiveplants.ca](http://www.ontarioinvasiveplants.ca).

## FALL HARVEST

The garden will be closed on October 31<sup>st</sup> of each year. By this date, all garden plots should be harvested and any old plants, weeds, sticks, cages, and other materials should be removed. The entire garden will be rototilled at the end of the season.

## SECURITY AND ACCESS

In order to ensure that the garden is safe from vandalism and protected from wildlife, the garden is surrounded by a chain link fence that will have two points of access.

The gates are controlled by the Garden Contact and will act as the main point of entrance to the garden. A passcode padlock is used to secure these entrances and the code is given to gardeners once the garden season begins.

For your safety, the garden is only open for users between 8:00 am until sunset. It is recommended to consider gardening in pairs or keeping a cell phone nearby.

**Security service is available 24 hours per day at the Thunder Bay Campus.** Confederation College has guards at the service of anyone on campus to ensure that your experience is safe and secure. Security can be contacted by calling 807-623-0465.

Confederation College also offers a Security Campus Walk service. This service is provided at any time by the Security Officer on duty. Parties are safely escorted between an origin and a destination within the boundaries of the Confederation College campus. To request the Security Campus Walk service call 807-623-0465.

In case of an emergency call 911.

## GARDEN CONTACT

For general inquiries and registration information, please contact the Garden Contact for the 2026 gardening season:

### **Campus Sustainability**

**Email:** [sdg@confederationcollege.ca](mailto:sdg@confederationcollege.ca)

**Phone:** 807-475-6356

**To report theft, vandalism, and any unusual activities, contact the Security (available 24/7):**

**Location:** Room 123D, First Floor, Shuniah Building (left of the West Entrance main doors)

**Phone:** 807-623-0465

## SHED

There is one shed located at the garden for equipment storage, such as watering cans, tools, gloves, etc. **Items in the shed are available for all gardeners to use.** Please note that items left or stored in the shed are available for all gardeners to use. Ensure that you place items back into the shed neatly.

## BEEHIVE

The garden is home to a beehive. Please see garden map for beehive location. **Please be aware if you have a bee allergy.** Do not disturb the beehive.

## WATERING

Water is available via the watering hose, see garden map for location. Gardeners must follow water restrictions and conservation measures. **A gardener MUST remain at the garden while their garden is being watered.** Water left running is costly and could cause damage to the site. A timed water valve has been installed to limit the running time of the water.

When you have completed watering your plot(s), return the hose to beside the hose bib, neatly coiled for the next user.

## GARDEN MAINTENANCE

The maintenance of common areas and furnishings, fencings, trees, trash receptacles, compost areas, pathways, and waterlines are the shared responsibility of all gardeners. Walkways and areas should be kept free of tripping hazards. Waste should be placed in trash receptacles. Garden plots cannot contain permanent structures or additions and all items in a plot must be removed at the end of the gardening season.

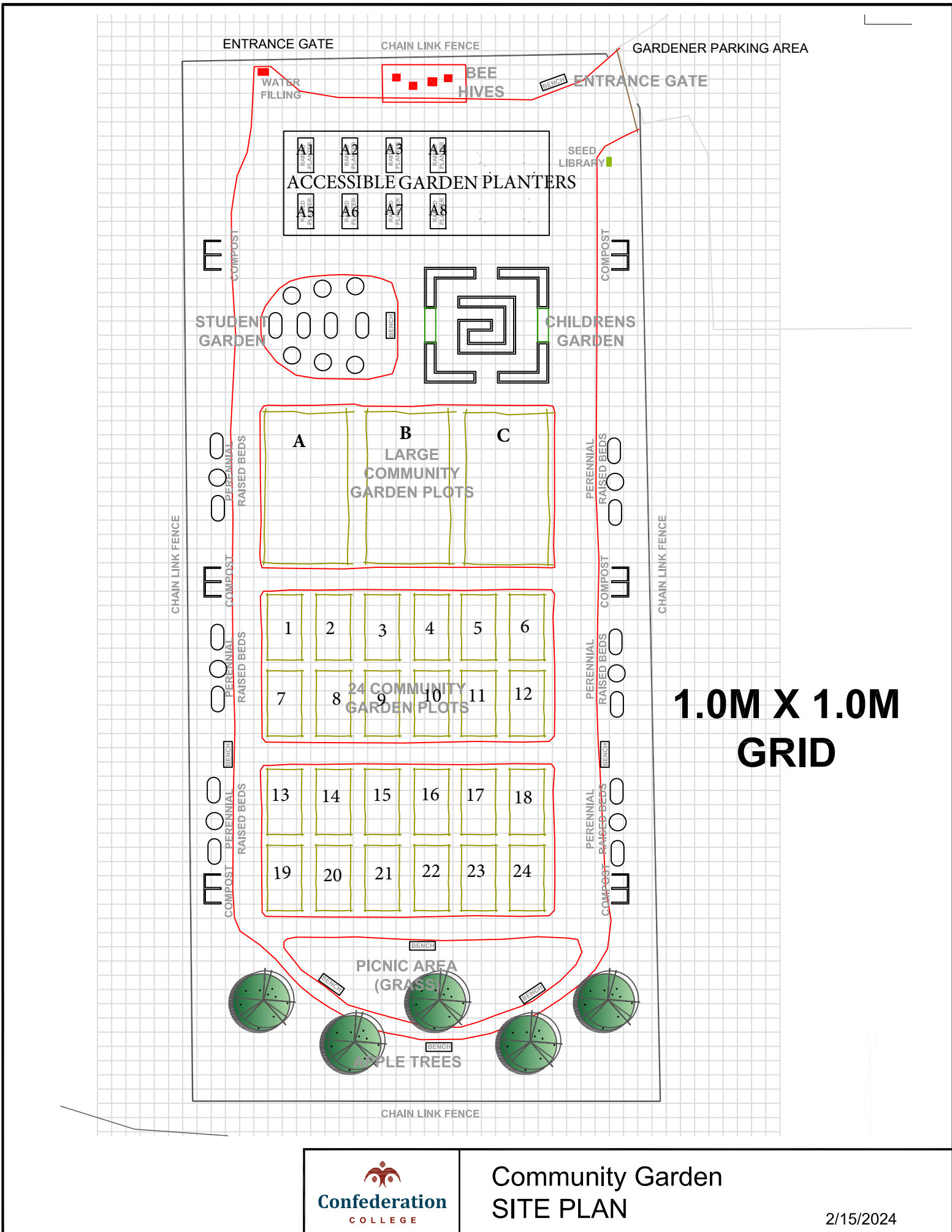
## ORGANIC GARDEN

The garden maintains organic gardening practices. All chemical herbicide, insecticides, and fertilizers are banned from use in the garden.

**Guidelines and rules are subject to updates. Updates will be distributed and posted.**

## GARDEN RULES

1. Pathways must be maintained at all times, kept level, clear, and free of personal items or gardening debris. Gardeners are expected to pick up litter and dispose of it properly.
2. Do not leave personal materials or tools in the garden area, Confederation College is not responsible for lost or stolen items. Report theft, vandalism, or unusual activity.
3. Gardeners are expected to be respectful and considerate of others at all times. Verbal or physical intimidation of another gardener will not be tolerated.
4. Do not expand beyond your designated plot or pick from another plot without permission.
5. The garden follows organic gardening practices; any/all chemical herbicide, insecticides, and synthetic fertilizers are strictly prohibited.
6. Pets are not allowed within the garden area, with the exception of service animals. Pets are welcome outside the garden area; owners are responsible for all clean up.
7. Gardeners may not consume, be under the influence of or bring alcohol or illegal drugs onto College property.
8. The growing or cultivation of illegal substances, cannabis, or cannabis products on site is strictly prohibited.
9. The possession, use, consumption, sale, or distribution of cannabis, cannabis oils, cannabis edibles, or cannabis products is prohibited on Confederation College property.
10. Smoking is not allowed within the garden area. Smoking on Confederation College property is only permitted in designated smoking areas. [Please click here for more information.](#)
11. Vehicles cannot be parked in the garden area. Vehicles requiring entry to the garden area must contact the Garden Contact to obtain access.
12. All gardener vehicles must display a valid gardener parking pass or College parking pass when parking on campus. Overnight parking is not permitted.
13. Do not leave the water running unattended. When you are finished watering, roll up the hose to the faucet area.
14. Lock the gate when you are leaving the garden.
15. Gardeners must remove all plants and non-plant materials (string, wire, wood, metal, plastic, etc.) from their plots at the end of the growing season. Garden plots must be left empty, neat, and tidy as the garden will be rototilled at the end of each gardening season.



ENTRANCE GATE

CHAIN LINK FENCE

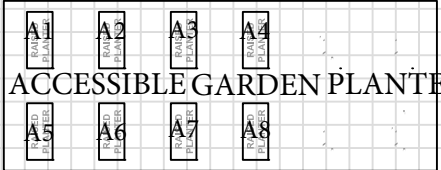
GARDENER PARKING AREA

WATER FILLING

BEE HIVES

ENTRANCE GATE

BENCH



ACCESSIBLE GARDEN PLANTERS

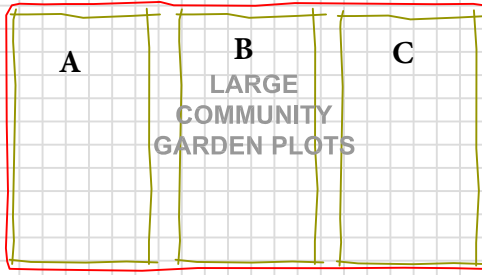
SEED LIBRARY

COMPOST

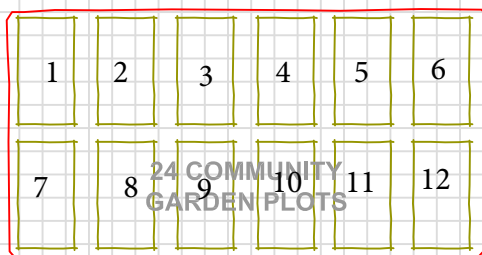
COMPOST

STUDENT GARDEN

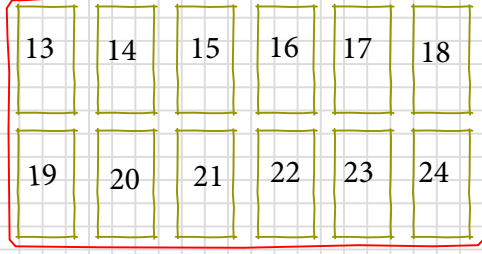
CHILDRENS GARDEN



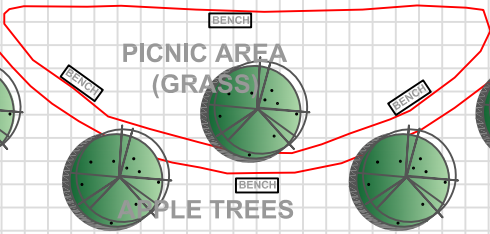
LARGE COMMUNITY GARDEN PLOTS



24 COMMUNITY GARDEN PLOTS



**1.0M X 1.0M GRID**



PICNIC AREA (GRASS)

APPLE TREES

CHAIN LINK FENCE

CHAIN LINK FENCE

PERENNIAL RAISED BEDS

PERENNIAL RAISED BEDS

COMPOST

COMPOST

BENCH

BENCH

CHAIN LINK FENCE



Community Garden  
SITE PLAN

2/15/2024